

# AGENDA

**Meeting:** DEVIZES AREA BOARD  
**Place:** Devizes School, Main Hall, SN10 3AG  
**Date:** Tuesday 7 March 2017  
**Time:** 7.15 pm

---

**The Area Board welcomes and invites contributions from members of the public. The chairman will try to ensure that everyone who wishes to speak will have the opportunity to do so.**

If you have any requirements that would make your attendance at the meeting easier, please contact your Democratic Services Officer.

---

Please direct any enquiries on this Agenda to Libby Beale (Senior Democratic Services Officer), direct line 01225 718214 or email [elizabeth.beale@wiltshire.gov.uk](mailto:elizabeth.beale@wiltshire.gov.uk)

All the papers connected with this meeting are available on the Council's website at [www.wiltshire.gov.uk](http://www.wiltshire.gov.uk)

Press enquiries to Communications on direct lines (01225) 713114 / 713115.

---

## Wiltshire Councillors

Cllr Anna Cuthbert, (Bromham, Rowde and Potterne)  
Cllr Simon Jacobs, (Devizes and Roundway South) (Chairman)  
Cllr Philip Whitehead, (Urchfont and the Cannings) (Vice Chairman)  
Cllr Peter Evans, (Devizes East)  
Cllr Sue Evans, (Devizes North)  
Cllr Richard Gamble, (The Lavingtons and Erlestoke)  
Cllr Laura Mayes, (Roundway)

## **RECORDING AND BROADCASTING NOTIFICATION**

Wiltshire Council may record this meeting for live and/or subsequent broadcast on the Council's website at <http://www.wiltshire.public-i.tv>. At the start of the meeting, the Chairman will confirm if all or part of the meeting is being recorded. The images and sound recordings may also be used for training purposes within the Council.

By entering the meeting room you are consenting to being recorded and to the use of those images and recordings for broadcasting and/or training purposes.

The meeting may also be recorded by the press or members of the public.

Any person or organisation choosing to film, record or broadcast any meeting of the Council, its Cabinet or committees is responsible for any claims or other liability resulting from them so doing and by choosing to film, record or broadcast proceedings they accept that they are required to indemnify the Council, its members and officers in relation to any such claims or liabilities.

Details of the Council's Guidance on the Recording and Webcasting of Meetings is available on the Council's website and available on request.

If you have any queries please contact Democratic Services using the contact details above.

## **Devizes Volunteering Forum 5:30-7pm Drop In**

Are you interested in volunteering? Come to our volunteering forum to find out more about the types of opportunities on offer locally for those with different skills and amounts of time to offer.

- |   |  |               |
|---|--|---------------|
| 1 | <b>Welcome</b><br><br>To welcome those present to the meeting.   | <b>7:15pm</b> |
| 2 | <b>Apologies for Absence</b><br><br>To receive any apologies for absence.  |               |
| 3 | <b>Minutes</b> ( <i>Pages 1 - 8</i> )<br><br>To approve and sign as a correct record the minutes of the meeting held on 23 January 2017.   |               |
| 4 | <b>Declarations of Interest</b><br><br>To receive any declarations of disclosable interests or dispensations granted by the Standards Committee.   |               |
| 5 | <b>Chairman's Announcements</b><br><br>To receive the following announcements through the Chairman: <ul style="list-style-type: none"><li>• Great British Spring Clean</li><li>• Windsor Drive</li></ul>   | <b>7:20pm</b> |
| 6 | <b>Partner Updates</b> ( <i>Pages 9 - 10</i> )<br><br>To receive updates from the following partners: <ul style="list-style-type: none"><li>a. Wiltshire Police</li><li>b. Fire and Rescue Service</li><li>c. Health Services</li><li>d. Devizes Community Area Partnership</li><li>e. Schools updates</li><li>f. Town and Parish Councils</li><li>g. Devizes Community Area Wellbeing Group</li><li>h. Open Doors</li></ul> | <b>7:25pm</b> |
| 7 | <b>Local Youth Network</b> ( <i>Pages 11 - 14</i> )<br><br>To note £3,295.72 funding is returned from Devizes Youthy.<br><br>To consider granting £3,295.72 to procure an engagement exercise with LGBT young people and to delegate authority to release the funds to the Community Engagement Manager and Locality Youth Facilitator, in consultation with the Local Youth Network, upon                                   | <b>7:40pm</b> |

	confirmation that due process checks are completed.	
8	<p><b>'Our Community Matters'- Priorities for Devizes Community Area</b></p> <p>The Board invites discussion on the community priorities arising from the 'Our Community Matters' (JSA) event held on 13 February, these priorities will set the workplan for the Area Board over the next four years.</p>	7:45pm
9	<p><b>Open Floor</b></p> <p>Residents are invited to ask questions of their local councillors.</p>	8:15pm
10	<p><b>Community Area Transport Group (CATG) and Local Highways Investment (Pages 15 - 48)</b></p> <p>To consider any updates from the Community Area Transport Group and the proposals for highways treatment (report attached).</p>	8:25pm
11	<p><b>Air Quality</b></p> <p>To consider an update from the Air Quality and Transport Strategy Group.</p>	8:35pm
12	<p><b>Area Board Funding (Pages 49 - 54)</b></p> <p>Councillors will be asked to consider the following applications to the Community Area Grants Scheme:</p> <ul style="list-style-type: none"> <li>• Bromham Parish Council- £2,950 for a play area scheme;</li> <li>• Rowde Village Community Shop- £952 for a vegetable chiller;</li> <li>• Waiblingen Way Residents Association- £1,250 for a ride on mower;</li> <li>• Market Lavington Museum- £1,250 for wall repairs.</li> </ul> <p>To consider the following application for Health and Wellbeing funding:</p> <ul style="list-style-type: none"> <li>• Safe Places project- £860 for marketing materials and costs.</li> </ul>	8:45pm
13	<p><b>Urgent items</b></p> <p>Any other items of business which the Chairman agrees to consider as a matter of urgency.</p>	9pm
14	<p><b>Close</b></p> <p>The next meeting will be held on 5 June at 6:30pm.</p>	9pm

# MINUTES

**Meeting:** DEVIZES AREA BOARD  
**Place:** Devizes Sports Club, London Road, Devizes  
**Date:** 23 January 2017  
**Start Time:** 6.30 pm  
**Finish Time:** 8.40 pm

---

Please direct any enquiries on these minutes to:

Libby Beale (Senior Democratic Services Officer), on 01225 718214 or [elizabeth.beale@wiltshire.gov.uk](mailto:elizabeth.beale@wiltshire.gov.uk)

Papers available on the Wiltshire Council website at [www.wiltshire.gov.uk](http://www.wiltshire.gov.uk)

---

## **In Attendance:**

### **Wiltshire Councillors**

Cllr Anna Cuthbert, Cllr Philip Whitehead (Vice-Chair, in the Chair), Cllr Peter Evans, Cllr Sue Evans, Cllr Richard Gamble and Cllr Laura Mayes

### **Wiltshire Council Officers**

Graeme Morrison (Community Engagement Manager)  
Helen Bradley (Locality Youth Facilitator)  
Jack Oatley (Apprentice Youth Worker)  
Libby Beale (Senior Democratic Services Officer)

### **Town and Parish Councillors**

Devizes Town – Simon Fisher, Judy Rose  
Erlestoke- Stan Jonik  
Potterne – Tony Molland  
Roundway – A Wooldridge  
West Lavington - Bonnie Matters

### **Partners**

Wiltshire Police  
DCAP- Ian Rose

**Total in attendance: 37**

---

<u>Agenda Item No.</u>	<u>Summary of Issues Discussed and Decision</u>
1	<p><u>Welcome</u></p> <p>The Chairman welcomed those present to the meeting.</p>
2	<p><u>Apologies for Absence</u></p> <p>Apologies for absence were received from Cllr Simon Jacobs, Cllr Philip Whitehead was to act as Chairman for the meeting, and Philip Bevan (Headteacher at Devizes School).</p>
3	<p><u>Minutes</u></p> <p><b>Resolved:</b></p> <p><b>To confirm the minutes of the meeting held on 21 November 2016.</b></p>
4	<p><u>Declarations of Interest</u></p> <p>There were no declarations of interest.</p>
5	<p><u>Chairman's Announcements</u></p> <p>The Chairman drew attention to a written announcement in the agenda pack from Wiltshire and Swindon Rural Crime Partnership and encouraged victims of rural crime to report these cases.</p> <p>Cllr Whitehead also updated on Esland's use of 'Hobbit House' as a residential children's home, he explained that this was permitted by their 'Certificate of Lawful Use' and did not require planning permission since the building was still being used as a residence.</p> <p>Members of the public were encouraged to get in touch if they were aware of another potential store facility Devizes Foodbank could use to keep their stock; the current store would be unavailable from 31 March 2017.</p>
6	<p><u>Partner Updates</u></p> <p>Sergeant Mark Andrews spoke to the written update from the Police in the agenda pack, it was highlighted that recent efforts to crack down on burglaries in Pewsey had been very effective and were to now be directed to Devizes.</p> <p>A video from the Police and Crime Commissioner introduced his precept proposals for 2017/2018 and the priority areas this funding would be invested in. The Chairman expressed disappointment about the lack of Police resource to enforce speed limits and advised he would contact the Police and Crime Commissioner about this as part of the precept consultation. Sergeant Andrews</p>

advised that the Police were willing to undertake speed checks where speeding was reported.

A written update from the Fire and Rescue Service was available in the agenda pack.

Written updates from HealthWatch Wiltshire and the Clinical Commissioning Group were available in the agenda pack. A video was shown which encouraged people to use their local pharmacy to receive treatment for minor ailments, rather than going to A&E. Feedback on the video included the comment that it could be dangerous for people to postpone seeking medical advice if they weren't sure whether an ailment or injury was serious.

Cllr Judy Rose, Devizes Community Area Partnership, advised that there were shocking numbers of missed GP appointments in Wiltshire and an information campaign would take place to encourage people to cancel unwanted appointments.

Cllr Simon Fisher, Devizes Town Council updated that Devizes and Roundway councils would soon be merging and the new Devizes and Roundway Council would be meeting as one body ahead this to ensure it ran smoothly. The council would operate by a Committee system and there would be 21 members on the council.

Potterne Parish Council thanked Wiltshire Council planning officers for their assistance in developing a Neighbourhood Plan for the village.

Cllr Jonik, Erlestoke Parish Council, advised that new signage was needed in the village to prevent accidents and was advised to formally log this as a request on the 'Issues System' to be addressed by the Community Area Transport Group.

Mike Challinor provided an update on behalf of the Devizes Community Area Wellbeing Group and introduced an application from the Devizes' 'Men's Shed' project. It was noted that the group recommended this to the Area board on the condition that adequate governance arrangements for the club were in place, the Wellbeing Group had since received confirmation that these requirements had been met.

Graeme Morrison, Community Engagement Manager, advised the meeting that Devizes' 'Our Community Matters Conference', or 'JSA event' was to be held on Tuesday 13 February, anyone who wished to attend could register this with Graeme. It was also explained that a volunteering forum for Devizes was to be held immediately before the next Area Board meeting on 7 March. A video was shown to highlight the community events that had been organised across Wiltshire since 2012 to continue the legacy from this Olympic and Jubilee year. The officer also gave details of the 'Great British Spring Clean' event which would take place from March, and during which local communities were

	encouraged to litter pick
7	<p><u>Local Youth Network</u></p> <p>Helen Bradley, Locality Youth Facilitator, updated the Board that her Apprentice Youth Worker, Jack Oatley, was leaving the Council since his apprenticeship had come to an end. The Area Board gave its thanks to Jack for all of his hard work in the community area to support young people.</p> <p>Applications for youth grant funding were introduced, Cllr Anna Cuthbert spoke in support of the Youth For Christ funding application towards a summer programme, the programme had run in 2016 and had been exceptionally well-received. It was also commented that the school holidays were an ideal time for activities since young people had more free time. Councillors also spoke in support of the applications from Potterne Youth Club, Wiltshire Wildlife Trust and Potterne Cricket Club.</p> <p>Representatives from Wiltshire Wildlife Trust advised that the holiday club they had planned would build skills and confidence for young people at risk of isolation, these young people would be identified by youth clubs or through SPLASH.</p> <p>It was explained that the application from Potterne Cricket Club would refurbish the club's nets to enclose the facility and ensure safety, to the benefit over 120 young people who were involved in the club. The grant was a capital application and could be funded from the community area grant budget in exchange for making revenue available to those grant applicants.</p> <p><b>Resolved:</b></p> <p><b>To grant Potterne Youth Club £4,912 for trips and resources;</b></p> <p><b>To grant Wiltshire Youth For Christ, £2,500 for a summer programme;</b></p> <p><b>To grant Wiltshire Wildlife Trust £2,450 for a holiday club;</b></p> <p><b>To grant Potterne Cricket Club £3,882 for refurbishment and improvement of cricket nets.</b></p>
8	<p><u>Open floor session</u></p> <p>The public were invited to ask questions of their local councillors.</p> <p>Sue Buxton, Devizes Labour Party, presented a petition to the Board opposing Government proposals to introduce grammar schools. Cllr Laura Mayes, Cabinet Member for Children's Services advised that it was not a priority for Wiltshire Council to provide grammar schools and that Wiltshire's schools were performing very well. It was noted that this policy was not yet being developed and that, as and when these policies were brought forward, councillors would</p>



	<p>represent the concern about the impact this could have in Wiltshire.</p> <p>A question was raised about reporting street lights which had gone out, Cllr Whitehead confirmed this should be reported on the My Wiltshire site, however if no action had been taken he could be contacted directly. It was also confirmed that fly tipping should be reported to the Council, however if it was on private land, the Council would be unable to act.</p> <p><b>Resolved:</b></p> <p><b>To note the petition received in respect of grammar schools.</b></p>
9	<p><u>Air Quality in Our Area</u></p> <p>Cllr Anna Cuthbert updated on the work of the Devizes Air Quality and Transport Strategy Group and thanked the officers and local people who supported it, including: Kate Freeman, Philippa Morgan and Nigel Carter. The group had recently supported better signage around the town and resurfacing the canal towpath. Other areas of the canal towpath were soon to be improved, with resurfacing expected to be complete by Easter.</p> <p>The group had investigated two road junctions causing poor air quality: Shane's Castle and Windsor Drive/London Rd junctions. The group had commissioned research into possible improvements at both locations, work at Shane's Castle would be expensive, approximately £630,000, and would only bring in moderate improvements, by contrast works at Windsor drive would be cheaper at £347,000 and should bring significant improvements to traffic flow. It was explained that the funding available for this project was 'Section 106 money' that had been paid by developers to compensate for bringing increased traffic to the area.</p> <p>Following questions from the floor it was confirmed that modelling had been undertaken to ensure that the traffic problem would not just be moved from this junction to another area. It was understood that the traffic situation should be improved, however there was no quick fix. The Councillor also confirmed that, although research has been commissioned about traffic flow in this location before, current figures were required to allow for the traffic modelling. It was noted that there was a pedestrian crossing near to the junction and this would need to be synced to the lights on the new junction to allow traffic flow. Representatives from Wiltshire Wildlife Trust offered to help plant up green areas around the junctions.</p> <p><b>Resolved:</b></p> <p><b>To proceed with an improvement scheme to the Windsor Drive/London Road Junction at a cost of £347,000 from Section 106 funding.</b></p>

10	<p><u>Devizes Chamber of Commerce - Supporting Local Businesses</u></p> <p>Richard Jaggs, Devizes Chamber of Commerce, updated the meeting that the Chamber in the town currently had 60 members and was looking to attract more with a competitively priced membership cost. The Chamber hosted different business events in the town, such as breakfast networking and social events, and sponsored local festivals such as the Devizes Carnival. It was noted that the Chamber was currently developing a new website.</p> <p><b>Resolved:</b></p> <p><b>To thank Richard Jaggs for the informative presentation.</b></p>
11	<p><u>Wiltshire College- Courses and Specialist Support</u></p> <p>Julia Acklam, Wiltshire College, presented on the courses and specialist support the college offered to its students and the development of new campuses across the county. The officer explained that there were currently four campuses in Wiltshire, offering a variety of college and degree-level qualifications, alongside apprenticeships. The college could also offer a 'Foundation Programme' for students with learning disabilities. It was highlighted that all the courses offered were vocational and the College worked with businesses to train the type of worker needed in the local economy. It was noted that there was not a university in Wiltshire and therefore the College was essential to providing more highly skilled workers for the local economy.</p> <p>The meeting heard that the College worked with local employers to assist them in offering apprenticeships and advertised local apprenticeships on its website. Members of the public were pleased to hear about the good work the college was doing and the facilities it had, such as a working farm campus at Lackham and access to the race track at Castle Coombe.</p> <p><b>Resolved:</b></p> <p><b>To thank Julia for the informative presentation.</b></p>
12	<p><u>Area Board Funding</u></p> <p>Members were invited to consider applications to the Community Area Grants Scheme.</p> <p>A representative from Potterne Village Hall spoke in support of the application or funding to upgrade the Hall's fire doors to be in line with current regulations. The Board heard that Bishops Cannings Cricket Club required funding towards a replacement mower, the club hosted over 80 games a season, for which a mower was essential. The Board supported the application however noted it was a significant amount of funding and discussed funding a slightly smaller amount of £4,500.</p>

	<p>A representative from Wiltshire Wildlife Trust explained that their funding application would allow the Trust to make recreational improvements to Devizes and Roundway Orchard which they used to work with adults who had mental health issues. St James Church Bellringers had applied for funding to refurbish the church bells which were used for bellringing and as a tourist attraction. Devizes Lions Club spoke in support of their application for £2,000 towards a coaching weekend which would be offered to around 500 young people between school years 4 -8, the event had been running for many years and been extremely successful.</p> <p>The Chairman introduced an application from Cllr Simon Jacobs for funding to facilitate disabled access and purchase new strimmers for Drew's Pond Wood, the project team update that work on the wood was making good progress.</p> <p>An application for Health and Wellbeing funding for a 'Men's Shed' was introduced, it was a place in which people could carry out their hobbies and pass skills on to others. It was confirmed that ladies were also welcome to use the club.</p> <p><b>Resolved:</b></p> <p><b>To grant Potterne Village Hall £2,836 for replacement fire doors;</b></p> <p><b>To grant Bishops Cannings Cricket Club £4,500 for a new mower;</b></p> <p><b>To grant Wiltshire Wildlife Trust £1,312.31 for recreational improvements to Devizes and Roundway Orchard;</b></p> <p><b>To grant St James Church Bellringers £800 for the refurbishment of the bells;</b></p> <p><b>To grant Lions Club of Devizes £2,000 towards a coaching weekend.</b></p> <p><b>To grant £2,400 to facilitate disabled access and purchase new strimmers for the Drew's Pond Wood Project.</b></p> <p><b>To grant £2,590 for towards a Men's Shed Club in Devizes.</b></p>
13	<p><u>Community Area Transport Group (CATG)</u></p> <p>Cllr Whitehead introduced recommendations arising from the Community Area Transport Group meeting held on 11 January:</p> <p><b>Resolved:</b></p> <p><b>To fund £3,000 towards a bus stop hardstanding at Windsor Drive, subject to a £1,000 contribution from the Parish Council.</b></p>

	<p><b>To fund £1,000 towards a dropped kerb at Minty's Top Bromham, subject to a 25% project contribution from the Parish Council.</b></p> <p><b>To fund £300 for playground warning signs in Etchilhampton, subject to a 25% project contribution from the Parish Council.</b></p> <p><b>To retain the existing two priorities for freight management: c40 High St Great Cheverell and B3098 Market Lavington/Wedhampton.</b></p> <p><b>To note the progress of other actions by the CATG.</b></p>
14	<p><u>Urgent items</u></p> <p>There were no urgent items.</p>
15	<p><u>Evaluation and Close</u></p> <p>The next meeting was to be held on 7 March 2017 at Devizes School, this was to be a Tuesday.</p>



## Area Board Update - February 2017

Healthwatch Wiltshire is a local independent organisation which exists to speak up for people on health and care. If you have used a service recently then we would like to hear from you. We use what people tell us when we meet with the commissioners and providers of services to make sure that they take account of your views and experiences.

### S.A.I.L.

The Your Care Your Support Wiltshire (YCYSW) website team are adding forms to help people do some of the business of social care online. Recently we added a S.A.I.L (Safe and Independent Living) form. S.A.I.L is a partnership between Dorset & Wiltshire Fire & Rescue Service and Wiltshire Council to offer anyone an assessment promoting safe and independent living in your own home. A Dorset & Wiltshire Fire & Rescue Service representative can offer a Fire Safety risk assessment, safety advice, advice on night-time routines, making an escape plan, checking smoke alarms, and signpost to benefits advice and debt advice. To request a visit, you can log in to Your Care Your Support, and with an activated account, complete the SAIL request form online: [www.yourcareyoursupportwiltshire.org.uk/care-and-support/safe-and-independent-living.aspx](http://www.yourcareyoursupportwiltshire.org.uk/care-and-support/safe-and-independent-living.aspx).



### The Pressure on Beds

The national media has been full of stories about pressures on the NHS. In Wiltshire, hospitals and the NHS Wiltshire Clinical Commissioning Group have been urging people to only go to Emergency Departments if necessary. You are asked to consider other services, such as your GP, minor injury units or your pharmacist to ask if they can treat your condition.

We have been hearing peoples' experiences of being discharged from hospital to other care settings around the county. We heard that, for most people, the system is working well with 71% of people saying they were 'very satisfied' or 'satisfied' with their discharge. However, we have also heard of problems from people who didn't feel informed or included in decisions about their care, and difficulties arranging care at home for people who need it. Problems with transport to get home, and knowing who is responsible for care after discharge were also issues for some of the people we spoke to. Our full report has been published at [www.healthwatchwiltshire.co.uk/wp-content/uploads/2017/01/Transfers-of-Care.pdf](http://www.healthwatchwiltshire.co.uk/wp-content/uploads/2017/01/Transfers-of-Care.pdf). We have fed this information back to the people who run the services, so they know where the system is and is not working well.

**Contact us:**  
 Tel 01225 434218  
[info@healthwatchwiltshire.co.uk](mailto:info@healthwatchwiltshire.co.uk)  
[www.healthwatchwiltshire.co.uk](http://www.healthwatchwiltshire.co.uk)



**Report to** Devizes Area Board  
**Date of meeting** 7 March 2017  
**Title of report** Youth Funding Procurement of PAYP providers

**Purpose of the Report:**

To note that funding is being returned to the Area Board from Devizes Youthy. £3295.72 has been returned from a total grant of £4065.54 due to the project discontinuing.

This project was to provide an LGBTQ+ youth club. The LYN have prepared a procurement request to utilise this portion of funding for its original intention.

To consider the listed procurement purchases of positive activity providers; using youth funding, as detailed below, together with the recommendations of the Local Youth Network (LYN) Management Group.

PAYP Provider	Amount requested	LYN Management Group recommendation
To be confirmed	£3295.72	To delegate procurement to the CEM and LYF in consultation with the LYN.

**1. Background**

The recommendations from the LYN Management Group has been made in accordance with the following guidelines:

- Leaders guidance for Community Area Boards on Positive Activities for Young People
- Positive Activities for Young People local Youth Network Terms of Reference
- Positive Activities Toolkit for Community Area Boards
- Procurement Policies and Guidelines <http://thewire.wiltshire.council/index/service-areas-carolyn-godfrey/business-services-procurement/procurement-policies-and-guidance.htm>

Young people have considered these and identified them as a priority for Area Board funding.

**2. Main Considerations**

- 2.1. Councillors will need to be satisfied that Youth Funding awarded in the 2016/2017 year are made to projects that can realistically proceed within a year of it being awarded.
- 2.2. Councillors will need to decide and be assured that young people and the community will benefit from the funding being awarded and the project/positive activity proceeding. The application should meet the identified needs, priorities and outcomes for young people in the areas, as identified in the LYN Needs Assessment and Strategic Plan.
- 2.3. Councillors will need to ensure measures have been taken in relation to safeguarding children and young people.
- 2.4. Councillors will need to ensure that young people have been central to each stage of this Youth Funding procurement process, through the Local Youth Network Management Group.
- 2.5. Councillors will need to be satisfied that procurement policies and guidelines have been adhered to.

**3. Environmental & Community Implications**

Youth Funding will contribute to the continuance and/or improvement of cultural, social and community activity and wellbeing in the community area, the extent of which will be dependent upon the individual project.

**4. Financial Implications**

Financial provision had been made to cover this expenditure.

**5. Legal Implications**

There are no specific legal implications related to this report.

**6. Human Resources Implications**

There are no specific human resources implications related to this report.

**7. Equality and Inclusion Implications**

Ensuring that Community Area Boards and LYNs fully consider the equality impacts of their decisions in designing local positive activities for young people is essential to meeting the Council’s Public Sector Equality Duty.

**8. Safeguarding Implications**

Wiltshire Council has ensured that the necessary policies and procedures are in place; through its’ procurement process, to safeguard children and young people. However, the Area Board needs to be satisfied that the providers being procured have everything necessary in place. The Locality Youth Facilitator has assessed this and agreed providers meet safeguarding requirements.

**9. Procurement of PAYP for consideration**

<b>Procurement purchase ID</b>	<b>Provider</b>	<b>Project Proposal</b>	<b>Requested</b>
To be confirmed	To be confirmed	LGBTQ + youth club	£3295.72
<p><b>Provider (details of the PAYP provider)</b>            2 Providers have been approached. We have 1 letter of intent from a provider stating they require more time to prepare their quotation. For this reason the LYN would like to ask for delegated authority to ensure this is carried out.</p> <p><b>Positive activity description</b>            A consultation and planning exercise. To make contact with young people who are LGBT or would consider attending and LGBT group. Understand the needs and desires for this group to establish if a group is necessary or another form of engagement. Then to work with the young people to submit a proposal plan to the area board for the continued work identified in the project.</p> <p><b>Recommendation of the Local Youth Network Management Group, with any conditions</b>            To delegate the decision to the CEM and LYF in consultation with the LYN in view of the end of the financial year approaching and no further area boards planned due to election period.</p>			



Background documents used in the publication of this report:

- Quotation request proposal

**Report Author**

Helen Bradley, Locality Youth Facilitator

Tel: 07919396465 Email: [helen.bradley@wiltshire.gov.uk](mailto:helen.bradley@wiltshire.gov.uk)



**Wiltshire Council**

**Devizes Area Board**

**7 March 2017**

---

**Subject: Area Board Highways Information**

**Cabinet Member: Councillor Philip Whitehead – Highways and Transport**

**Key Decision: No**

---

## **Executive Summary**

The local highway network is vital to providing connectivity for businesses and communities, and effective maintenance to ensure its availability is essential to the economic development of the county. Wiltshire Council recognises the importance of maintaining and managing its highway network effectively.

The 'Local Highways Investment Fund 2014 – 2020' is addressing the long standing under investment in highways maintenance, which has been a problem nationally for many years.

The significant investment of £21 million annually for six years by Wiltshire Council has already seen a substantial improvement in the condition of the county's road network, with a 30% reduction in the carriageway maintenance backlog in the first two years of the investment.

Information has been prepared for each Area Board (see **Appendix 1**) showing the schemes completed in recent years, and a summary of road condition information.

An indicative list of priority sites for treatment in 2017/18 has been developed (see **Appendix 2**). The list includes surface dressing on the A342 to continue the surfacing carried out last year at Dunkirk Hill, and surface dressing on C roads.

## **Proposals**

It is recommended that:

- (i) It is noted that good progress has been made on implementing the 'Local Highways Investment Fund 2014 – 2020', and there has been a substantial improvement in road conditions in Wiltshire.

- (ii) The list of proposals are reviewed and any amendments or potential future sites for treatment are forwarded to the Highways Asset Management Team for further investigation.

### **Reason for Proposals**

The highway network forms the Council's largest asset, and it is important that it is maintained in the most cost-effective way in order to show value for money. This includes the use of asset management and whole life costing approaches to inform investment decisions.

Asset management principles have been applied for many years in Wiltshire to ensure appropriate investment with longer term planning. The list of proposed sites for treatment in 2017/18 should further improve the condition of the Council's roads.

**Parvis Khansari**  
**Associate Director Highways and Transport**

## Wiltshire Council

### Devizes Area Board

7 March 2017

---

**Subject:** Area Board Highways Information

**Cabinet Member:** Councillor Philip Whitehead – Highways and Transport

**Key Decision:** No

---

### Purpose of Report

1. To provide an update on progress on the 'Local Highways Investment Fund 2014 – 2020', and to consider future road resurfacing sites.

### Relevance to the Council's Business Plan

2. The highways service supports three priorities of the Council's Business Plan:
  - Outcome 2 – People in Wiltshire work together to solve problems locally and participate in decisions that affect them
  - Outcome 3 – People in Wiltshire have a high quality environment
  - Outcome 6 – People are as protected from harm as possible and feel safe

### Background

3. The local highway network is vital in providing connectivity for businesses and communities; effective maintenance to ensure its availability is essential to the economic development of the county. Wiltshire Council recognises the importance of maintaining and managing its highway network effectively.
4. The highway network in Wiltshire comprises 4,400 kilometres of road, 3.9 million square metres of footway, 981 bridges and over 50,000 street lights and illuminated signs. The replacement value of the assets is over £5 billion, and it would cost over £330 million to resurface all of the Council's roads.
5. The condition of the county's roads is important to the public. This is demonstrated by the results of the Council's People's Voice and the National Highways and Transportation (NHT) surveys, which indicate low levels of public satisfaction with road conditions nationally.
6. In October 2013 Cabinet agreed to increase highway maintenance funding to £21 million for six years. This was subsequently included in the Council's future budget, and forms the basis of the 'Local Highways Investment Fund 2014 – 2020'. The increased investment in highways maintenance has enabled a large

number of schemes to be progressed to improve the condition of the network and its infrastructure.

7. The Council has applied the principles of asset management to the maintenance of the highway network, which involves taking into account the lifecycle of the assets and monitoring performance of the intervention and investment strategies. The Highways Asset Management Policy and Strategy were reviewed by the Environment Select Committee in October 2015 and subsequently adopted by Cabinet.

## **Main Considerations for the Council**

### Local Highways Investment Fund 2014 – 2020

8. The 'Local Highways Investment Fund 2014 – 2020' is addressing the long standing under investment in highways maintenance and consequent backlog, which has been a problem nationally for many years. The proposed significant investment of £21 million annually for six years by this Council is delivering substantial improvements in the condition of the highway network in Wiltshire.
9. A range of investment options was initially considered, which ranged from spending the minimum necessary to keep road conditions unchanged to treating the whole of the network. It was intended that the investment should be used to improve approximately 664 kilometres of the network (about 15%), and that annually up to 238 Kilometres of road could be surfaced, depending on the treatment required and the deterioration of the network.
10. In the first two years of the investment there were a number of sites which needed substantial reconstruction work and, as expected, the lengths of road treated were consequently less than the indicative target. In 2016/17 a substantial programme of surface dressing has been undertaken and the total length of road resurfaced has increased considerably.

<b>Year</b>	<b>Length treated (km)</b>
2014/15	148
2015/16	182
2016/17	250

11. A total of 580 kilometres of road has been resurfaced to date, and the Council is currently on target to achieve the anticipated improvement by 2020, subject to funding continuing at current levels. There have also been a significant number of smaller sites treated with hand patching, which has addressed localised areas in poor condition.
12. The detailed calculation of the backlog carried out by the Council's specialist consultants WDM indicates that there has been a significant reduction in the highways maintenance backlog in the first two years of the investment:

	<b>2013/14</b>	<b>2014/15</b>	<b>2015/16</b>
<b>Calculated backlog</b>	£69.4 million	£63.3 million	£48.2 million

13. The backlog has decreased by 30% since the 'Local Highways Investment Fund 2014 – 2020' started. Good progress has been made in reducing the backlog, but continuing investment, as originally planned, would be required to remove the remaining backlog.
14. A summary of road conditions and other highway information has been prepared for the Area Board (see **Appendix 1**). This information will form the basis of data to be made available on the Council's website, including regularly updated information on potholes and other reports through the My Wiltshire app, the website and by telephone. The website will also be developed to explain the Council's highway maintenance policies and strategies in greater detail.
15. The Council's highways maintenance investment strategy was developed using the Department for Transport funded Highways Maintenance Efficiency Programme (HMEP) toolkit, which identified that timely investment in surface dressing of the minor rural roads would be cost-effective given the current condition of the local road network.
16. The individual sites for treatment were identified from the technical surveys of the road conditions, and were assessed and confirmed by the highway engineers. The lists of proposed sites for treatment have been reviewed by the Area Boards where representatives of the town and parish councils have been given the opportunity to consider local priorities.
17. Surface dressing work was carried out on a number of minor roads across the county last summer. This work sometimes known as 'tar and chippings' is preventative maintenance to seal the road construction and restore skid resistance. It is a cost effective way of extending the useful life of the roads.
18. Not carrying out any maintenance on these minor roads may initially appear attractive in order to save money, but in the longer term that would be a false economy as the repairs would be substantially more expensive if the roads were allowed to deteriorate, and there would be an increasing risk of claims as a result of accidents. The cost of injury compensation claims can be significantly higher than the repair costs, and the cost of doing repairs once a road is in bad condition would be much higher.
19. The overall condition of the road network in Wiltshire is now broadly similar to other authorities in the south west. However, based on the 2015 survey results, which are the latest available nationally, the condition of Wiltshire A roads is the same as the national average, but is below the south-west average. The B and C road conditions in Wiltshire are better than both the national and south west averages, but still not as good as in some of the other authorities in the south west.

20. The condition of the unclassified roads is more difficult to compare as the assessment methods are not necessarily consistent across authorities. In general terms the condition of the more important unclassified roads in Wiltshire compares well with similar authorities, but further assessment will be required to get a better understanding of conditions across the south west.
21. The National Highways and Transportation (NHT) surveys indicate that public satisfaction with road conditions in Wiltshire is below the national average, and for some years has been consistently lower than for similar authorities in the south west. It is anticipated that the effects of the current investment strategy will improve the results of future public satisfaction surveys.

#### Proposed Surfacing Programme 2017/18

22. Road safety is the top priority, and it is important to treat those sites identified as having reduced skid resistance in accordance with the Council's Skid Resistance Policy. It is necessary to have adequate skid resistance in order to reduce accidents and avoid claims against the Council.
23. There are a number of processes used to improve the road surface:
  - a. Retexturing- the surface is roughened by high pressure steel shot or water to abrade the surface to produce a rougher surface texture. This is cost-effective and avoids the substantially more expensive resurfacing which would otherwise be required.
  - b. Surface dressing – the traditional 'tar and chip' where the road is sprayed with hot bitumen and stone chippings are spread and rolled in. This is a cheap solution to seal the road surface and protect the underlying construction. This process should ideally be repeated every six or seven years.
  - c. Resurfacing – the existing road surface is usually milled off and a new layer of bituminous material is laid. In many cases stone chippings are rolled in to provide additional texture. This is the most durable surfacing but is expensive compared to the other treatments.
24. Careful consideration is given to which treatment to use, taking into account the condition of the existing road surface, volume and type of traffic. In some cases deeper reconstruction is required on sections of road to ensure there is a suitable foundation for the new surface.
25. There are a number of sites which were identified for treatment in previous years which for various reasons it has not yet been possible to complete yet. These have been included in the proposed programme for 2017/18, and will generally be programmed for the start of the programme.
26. There was an extensive programme of surface dressing of rural roads across the county this year. Within the villages and the more built up areas this treatment can be less robust, especially where there are significant vehicle turning



movements, and other surfacing materials can be more effective in these locations. It is intended to carry out surfacing in many of the built up areas adjacent to these recently surface dressed roads.

27. It has been some years since there has been surface dressing on many of the county's minor roads and this is a process which should ideally be repeated every six or seven years. It is proposed to continue the programme of surface dressing in 2017/18, with a large number of sites in the south of the county identified for treatment.
28. A list of priority sites for carriageway resurfacing work has been identified for the Area Board in 2017/18 (see **Appendix 2**). The list of sites will be reviewed and developed in more detail following consideration by the relevant Area Board.
29. The condition of many of the footways in residential areas has been a concern for some years. It has been possible to treat some of these in conjunction with adjacent carriageways when they have been resurfaced, but there are many footways which would benefit from treatment even though the road is in reasonable condition.
30. A survey of the condition of the county's footways is approaching completion and is being used to develop a list of sites for treatment. In view of the amount of footway in need of treatment it is proposed to prioritise the renewal or resurfacing of those areas identified as being in worst condition. The local Highways Engineers are reviewing the sites for treatment, taking into account the survey data.

### **Safeguarding Implications**

31. None.

### **Public Health Implications**

32. The condition of roads and related infrastructure can have serious safety implications. Improving the condition of highways contributes to reducing accidents, especially with regard to improving skid resistance. Roads, bridges, highway structures, signs and street lighting need to be kept in good condition in order to protect the public and those maintaining the assets.
33. The investment through the 'Local Highways Investment Fund 2014 – 2020' is improving the condition of the highway network and safety.

### **Corporate Procurement Implications**

34. There are no procurement implications at this stage.

### **Equalities Impact of the Proposal**

35. The improved maintenance of the highway network, its management using sound asset management principles, and good performance by the highways

contractors, should benefit all road users, including public transport, and vulnerable road users such as cyclists and pedestrians.

### **Environmental and Climate Change Considerations**

36. The effects of climate change could be significant for the highway network as was seen in the flooding of 2014, and the consequent damage to the roads, footways and drainage systems. Having robust maintenance strategies to improve the condition of the network helps build resilience into the infrastructure.
37. Where possible, suitable materials arising from road resurfacing schemes are recycled. Large quantities of road planings are used to repair damage on rights of way and on county farms, or provided to community groups. The presence of tar bound materials in older carriageways has caused problems on some sites as it has to be disposed of as contaminated waste, with consequent cost implications. Options for in-situ and other recycling processes are being examined in order to increase the recycling of highway materials.

### **Risk Assessment**

38. The application of good asset management principles, including the planned maintenance of the highway infrastructure and the establishment of formalised asset management policies, helps reduce the risk of incidents and claims.

### **Risks that may arise if the proposed decision and related work is not taken**

39. There is a risk of increased accidents, claims and public dissatisfaction if the programme of highway maintenance is not delivered or delayed. The principles of asset management have been followed by this Council for many years, but as future DfT funding will be dependent on demonstrating the application of good practise and asset management principles. Failure to do so will result in reduced funding in future years.

### **Risks that may arise if the proposed decision is taken and actions that will be taken to manage these risks**

40. It is important to ensure that highways asset management and service delivery are implemented effectively. Processes are currently in place with Service Delivery Teams established. These include representatives from the Council, consultants and contractors involved in delivering the services, and report to the Contract Management Meeting comprising senior managers from those organisations.

### **Financial Implications**

41. The highway network and related infrastructure forms the Council's largest asset, and has a replacement value of over £5 billion. It is important that they are maintained in the most cost-effective way in order to achieve value for money. This includes the use of a whole life costing approach to inform investment decisions.

42. The increasing drive for asset management from DfT will mean that failure to demonstrate the application of this approach will result in reduced funding from central government. An increasing proportion of available funding will be potentially withheld as an incentive. By 2020/21 Wiltshire could lose out on £2,782,000 of DfT funding if good asset management is not followed.
43. The financial pressures on the Council are well understood, and it may be necessary to reduce investment in the future. This would reduce the scope for consultation with the Area Boards as resurfacing work would need to be concentrated on those sites with serious safety defects.

### **Legal Implications**

44. The Council has a duty under the Highways Act to maintain the county's roads. The highway inspection procedures, policies and improvement plans ensure that this duty is fulfilled. The increased investment and improved road conditions is helping the Council meet its responsibilities with regard to road maintenance.

### **Options Considered**

45. There is a need to continue to apply asset management principles to the highway network and to ensure the performance of the contractors involved in delivering the service is good in order to keep the network in good condition and to ensure value for money.

### **Conclusions**

46. The highway network forms the Council's largest asset, and it is important that it is maintained in the most cost-effective way in order to show value for money. This includes the use of whole life costing approaches to inform investment decisions.
47. The 'Local Highways Investment Fund 2014 – 2020' has provided the opportunity to address the long standing under investment in highways maintenance, which has been a problem nationally for many years. The significant investment of £21 million annually by Wiltshire Council is seeing a substantial improvement in the condition of the highways network.
48. Good progress has been made in delivering the programme of highway maintenance and has included the involvement of the Area Boards to help set local priorities. It is intended that this process should continue in future years.

**Parvis Khansari**  
**Associate Director Highways and Transport**

Report Author:  
**Peter Binley**  
Head of Highways Asset Management and Commissioning  
January 2017

---

**The following unpublished documents have been relied on in the preparation of this report:**

None

**Appendices**

Appendix 1 – Local Highways Information

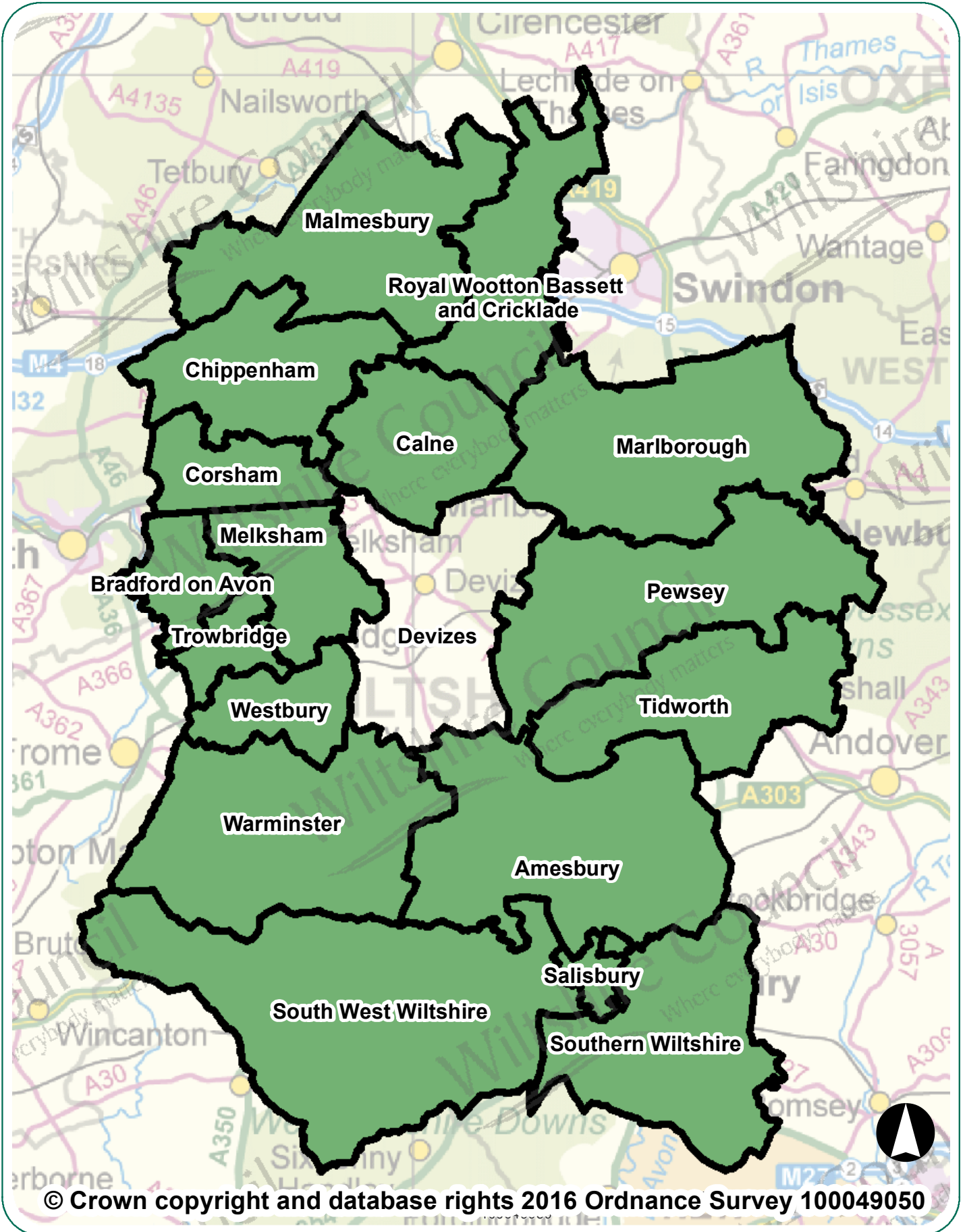
Appendix 2 – Proposed priority surfacing sites for 2017/18

APPENDIX 2- List of Priority Sites for Treatment 2017/18

<b>Road</b>	<b>Devizes</b>	<b>Recommended Treatment</b>	<b>Estimated Length (m)</b>	<b>Est Area of Site (m<sup>2</sup>)</b>
A342	A342 Dunkirk Hill (northwards from 2016/17 scheme)	Surface Dressing	803	5,364
B3098	B3098 Urchfont at Goosehole Farm	Retexture	80	464
B3098	B3098 Eastcott	Retexture	130	767
C20	Broadway - Ledgehill Market Lavington	Surfacing	2,457	14,406
C8	Horton Village	Surface Dressing	1,166	6,646
C20	C20 Ledge Hill - Black Dog to Market Lavington	Surface Dressing	1,348	7,660



# Devizes Area Board Highway Information



© Crown copyright and database rights 2016 Ordnance Survey 100049050

# Devizes Area Board Highway Information

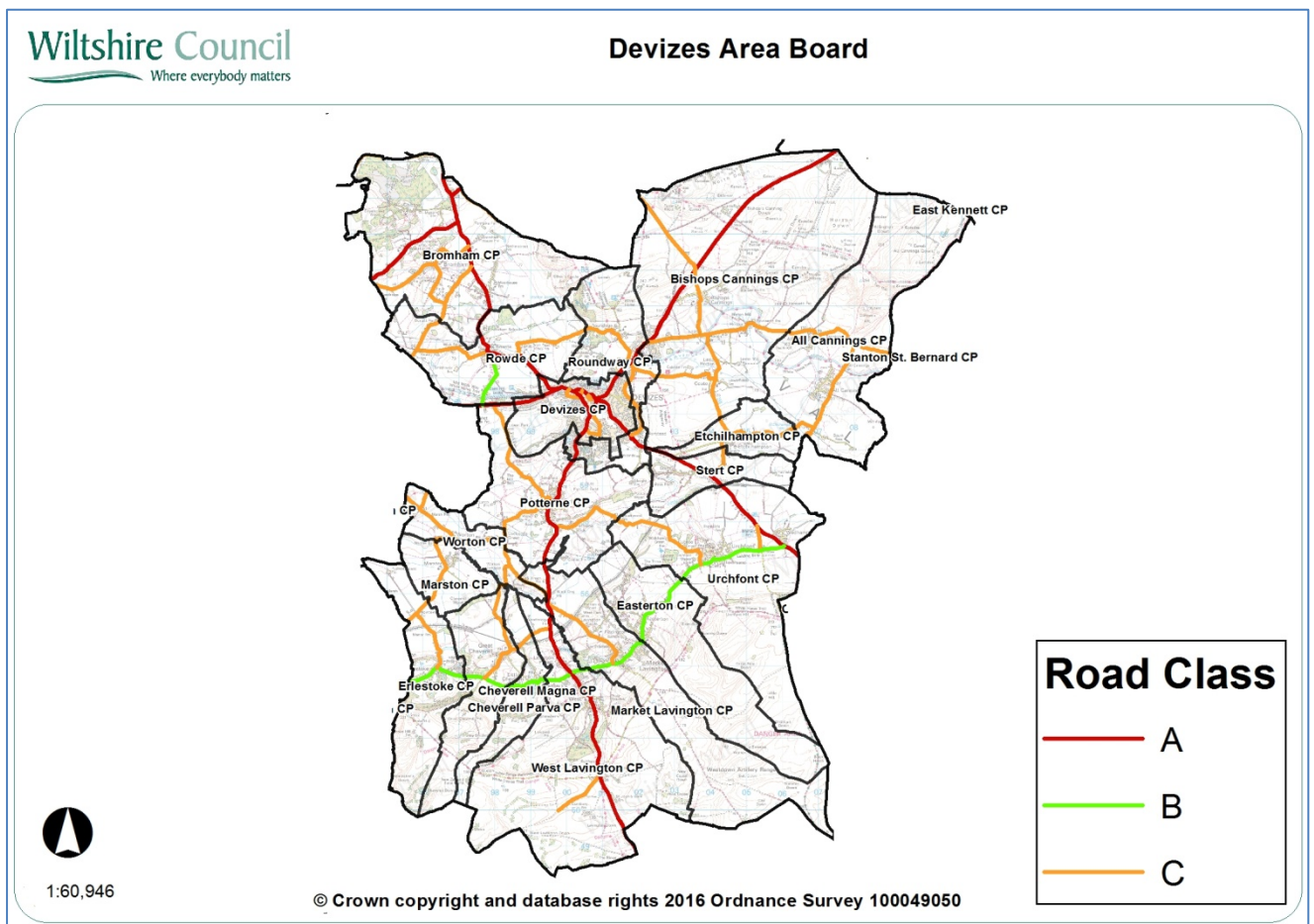
## Introduction

This document summarises highway information for your area board. It lists the recent highway and related work carried out by Wiltshire Council, including the road resurfacing carried out during the first two years of the 'Local Highways Investment Fund 2014 – 2020', and includes other information which should be of interest.

Further information on the Council's activities is available at the website [www.wiltshire.gov.uk](http://www.wiltshire.gov.uk). If you wish to report a specific highway issue please use My Wiltshire. Details are provided at the end of this document.

## Parishes in the community area are:

Etchilhampton, Bishops Cannings, All Cannings, Roundway, Potterne, Worton, Marston, Erlestoke, Cheverell Magna, Cheverell Parva, West Lavington, Market Lavington, Easterton, Urchfont, Stert, Devizes, Bromham, Rowde





## Network statistics in your area

### Road length by class

Road type	Urban (km)	Rural (km)
A Class Roads	17.95	31.37
B Class Roads	8.28	6.35
C Class Roads	21.53	55.5
Unclassified Roads	75.44	38.89
<b>Total</b>	<b>123.2</b>	<b>132.11</b>
	<b>Overall Total</b>	<b>255.31</b>

The council categorises its roads to reflect their importance. This enables an effective assignment of highway inspection frequencies and maintenance standards.

### Highway assets in your area

The council keeps an inventory of its highway assets in order to assist planning its highway maintenance. Important statistics relating to your board area are:

Asset Type	Measure
Carriageway	255.31 km
Footways adjacent to road	152 km
Footways (linked)	18.57 km
White road centre lines	114 km
Road kerbs	180 km
Grass verge (maintained)	351 km
Drainage grips	1, 936 number
Drainage pipe grips	149 number
Drainage gullies	5,517 number
Road signs	2, 328 number
Street lights	3,620 number

## **Major highway maintenance**

### **Road resurfacing**

Wiltshire has over 3,000 miles of road. The Council's 'Local Highways Investment Fund 2014 – 2020' is making a massive investment to improve the condition of the roads in Wiltshire over six years. The programme of work started in April 2014, and is designed and supervised by the Council's consultants Atkins, with the work carried out by our main highway contractors Tarmac and Eurovia.

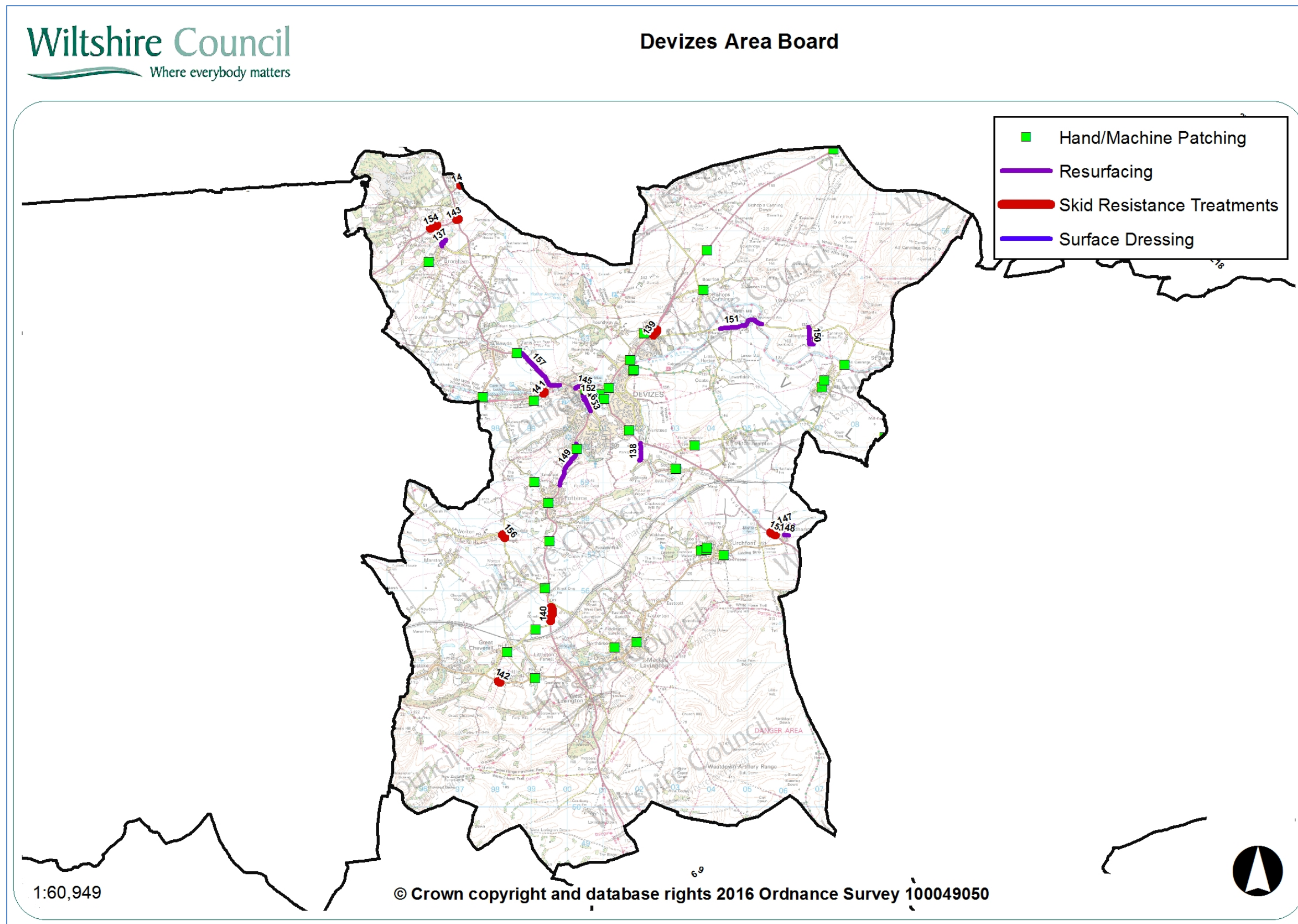
The work carried out in the first two years of the programme has improved a considerable number of the roads in previously poor condition. The locations of sites treated in recent years are shown below.

### **Carriageway repairs**

As well as resurfacing roads other works are undertaken to make localised repairs to keep the roads safe. The works undertaken in your area since 2014 are shown on the map below.

The wet winter and flooding in previous years has resulted in substantial damage to the road network. It is important that serious defects are treated promptly to keep the roads safe. The Council currently operates four Pothole teams that respond to urgent issues to keep the roads safe.

Plan showing major maintenance schemes & hand/machine patching sites completed since 2014



**Major maintenance completed since 2014**

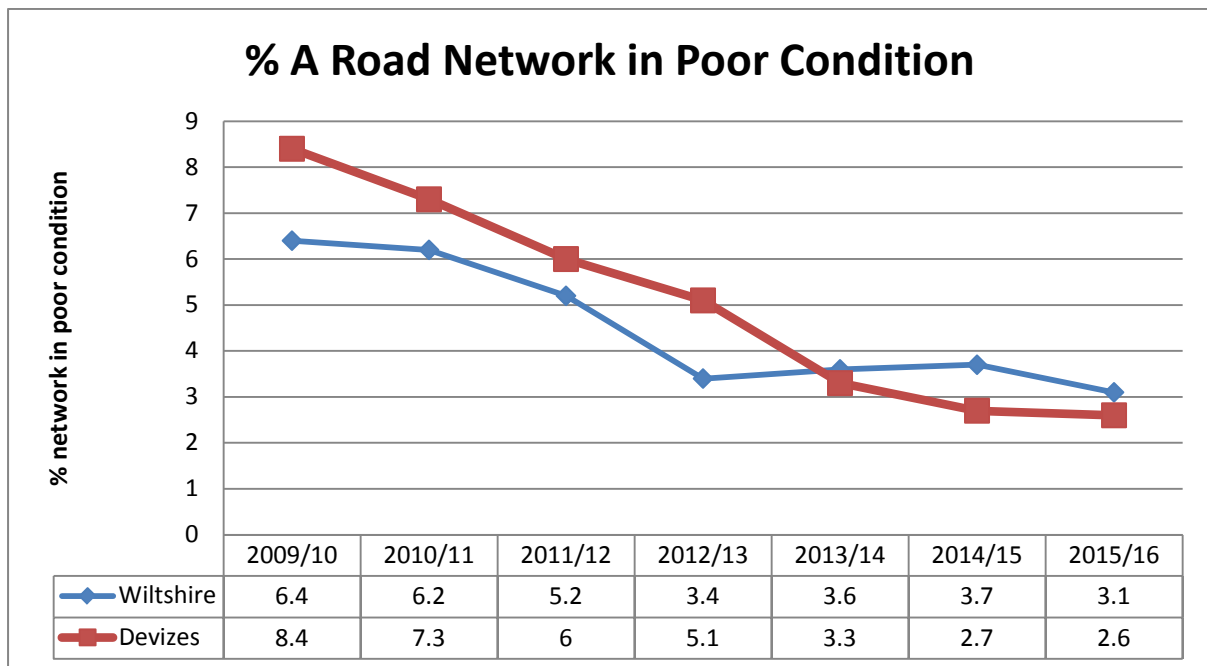
No	Location	Works
137	Greystones, Bromham	Resurfacing
138	Sleight Lane, Devizes	Resurfacing
139	Horton Road Roundabout To Start Of Dual Carriageway	Skid Resistance Improvements
140	C40 Cheverell Road To C20 Black Dog crossroads	Skid Resistance Improvements
141	Caen Hill Gardens To A342 Dunkirk Hill	Skid Resistance Improvements
142	Townsend Great Cheverell To 40mph Little Cheverell	Skid Resistance Improvements
143	Westbrook Rd (60mph To A342) Bromham	Skid Resistance Improvements
144	A3102/A342 To Back Lane To Back Lane	Skid Resistance Improvements
145	Devizes A361 New Park Street incl. Gains Lane	Resurfacing
146	Wine Street & High Street, Devizes	Resurfacing
147	The Cartway, Plum Lane, Wedhampton	Resurfacing
148	The Cartway, Plum Lane, Wedhampton	Resurfacing
149	A360 Potterne Village to Devizes	Resurfacing
150	UC Allington Loop	Resurfacing
151	C8 Horton Village	Resurfacing
152	West Central Car Park, Devizes	Resurfacing
153	A360 Long Street, Devizes	Resurfacing
154	Westbrook Road, Bromham	Skid Resistance Improvements
155	A342 at Wedhampton	Skid Resistance Improvements
156	Bend at junction Cuckolds Green, Worton	Skid Resistance Improvements
157	Dunkirk Hill to Rowde	Resurfacing

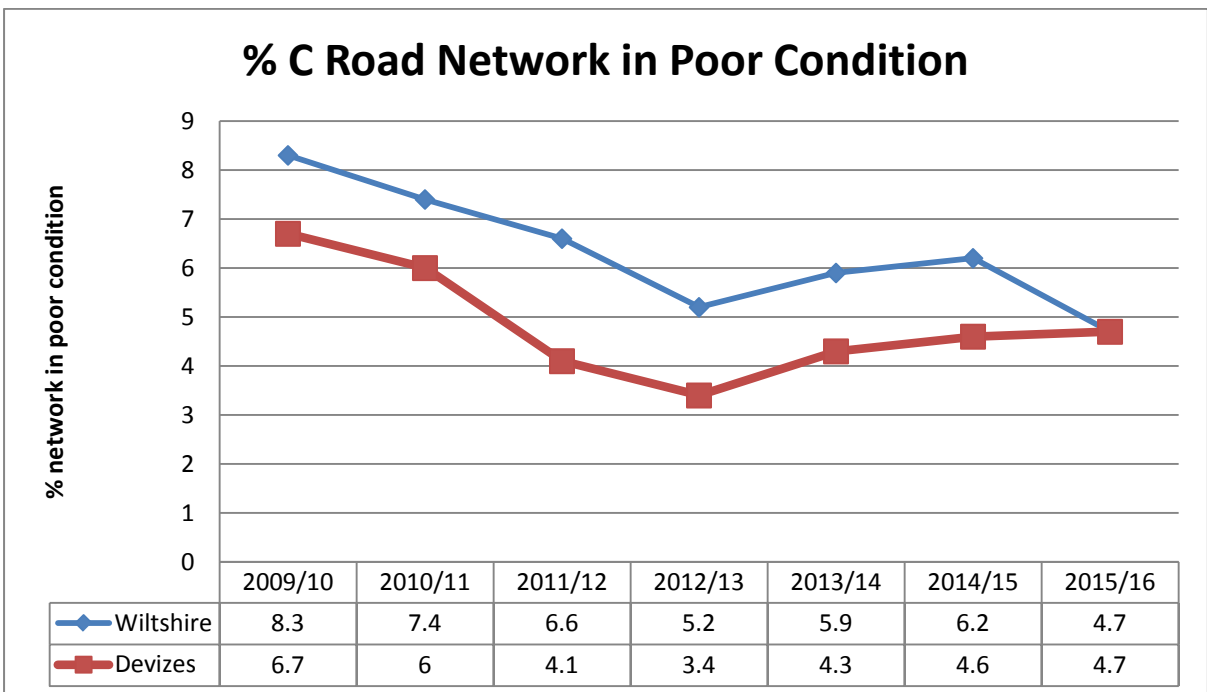
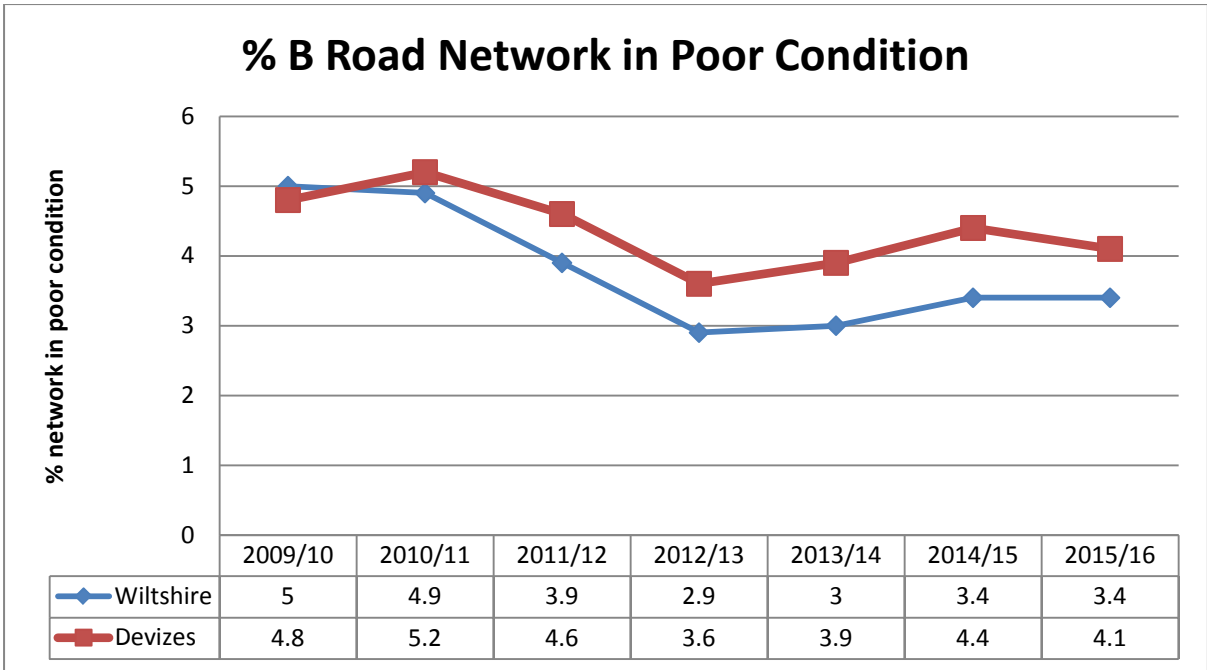
## Highway conditions and technical surveys in your area

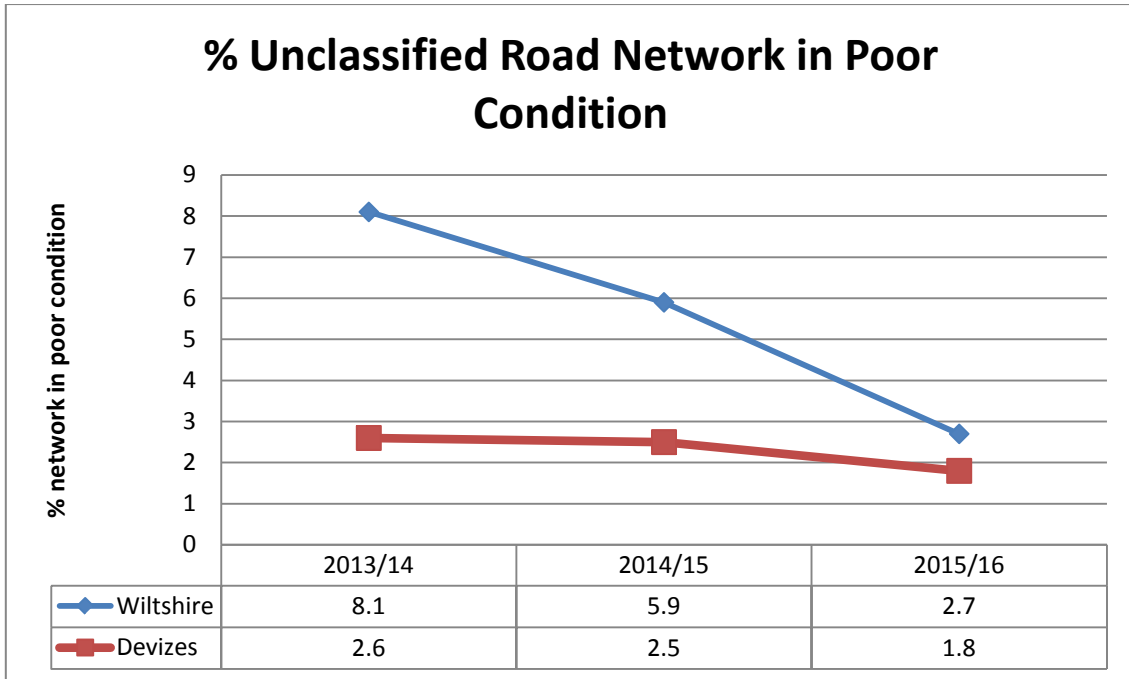
Roads deteriorate in condition because of various factors, including traffic volumes, ground conditions, and weather and drainage issues. Technical surveys of the condition of the highway network are carried out annually and the information is used to help prioritise schemes. Road safety is the priority, and maintaining adequate skid resistance on the busy high speed roads is vital.

The surveys include the use of a vehicle equipped with lasers and cameras to record road surface condition, which allows us to report on road conditions to the Department for Transport and to prioritise maintenance work. Other surveys include measuring skid resistance on the busier roads.

The road conditions in your area are shown below. It should be noted that low numbers are good because it indicates that less road length should be considered for treatment. More detailed information is shown in Appendix A.







## Integrated transport, bridge and drainage works

### Integrated transport

The Council's traffic engineering team work with our contractors to plan and deliver a range of projects to the local community, most notably through the Area Boards and Community Area Transport Groups (CATGs). The schemes range in size and complexity from simple sign installation through to more complex road safety and improvement schemes.

### Bridges

The Council regularly inspects its bridges and other highway structures. There is a programme of renewal and refurbishment works to keep them in good condition, as well as having to respond to damage caused by collisions.

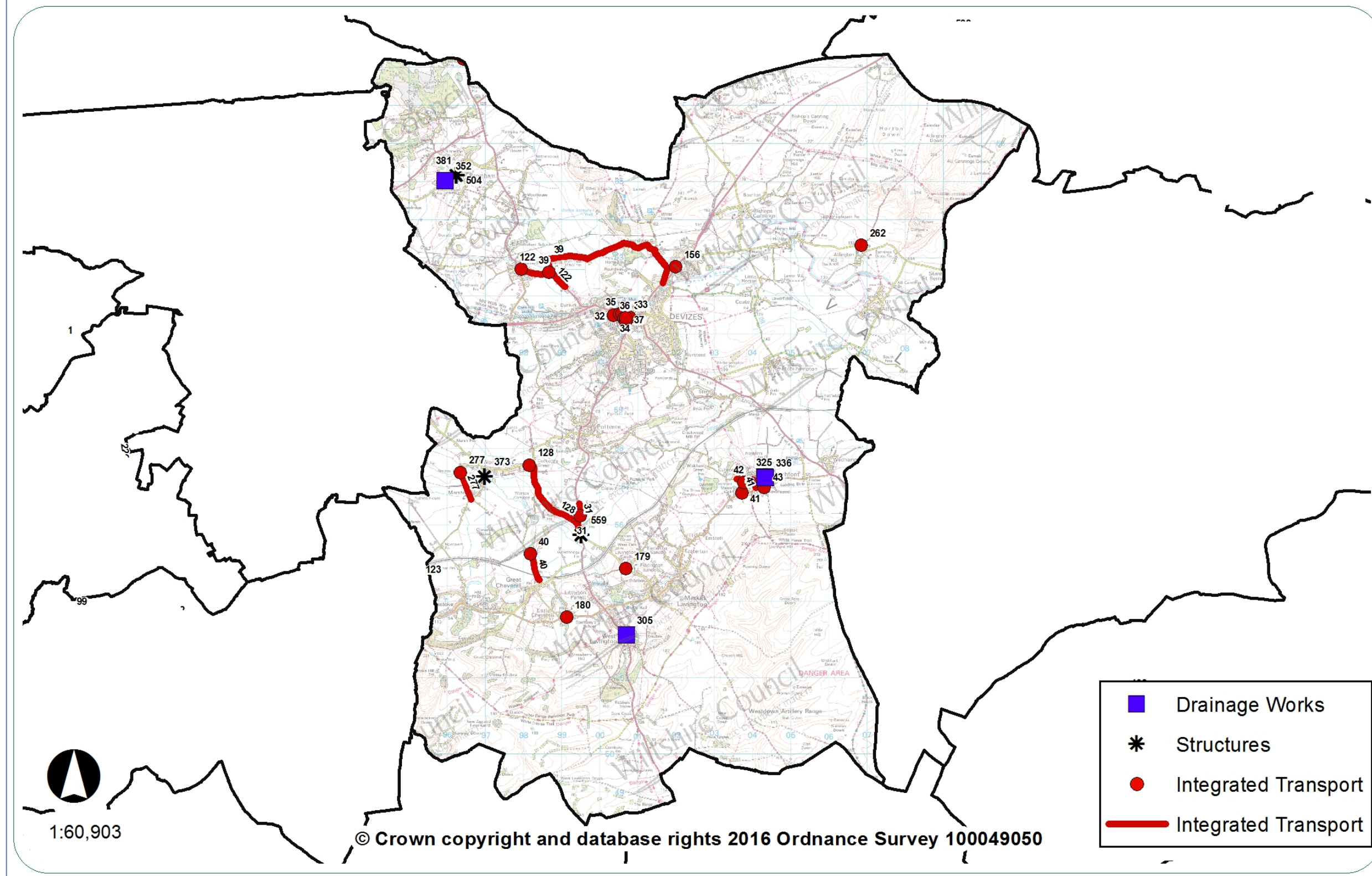
### Drainage

Programmes of drainage investigations, repairs and flood alleviation schemes are undertaken throughout the year, but the flooding in recent years has meant that there has been a need to respond immediately to flooding issues, as well as dealing with previously identified problem sites. The drainage improvement and flood alleviation work is co-ordinated through the Council's Operational Flood Working Groups that include the Environment Agency, Wessex Water, other organisations and stakeholders.

### Recent work in your area

The Integrated Transport, Bridge and Drainage schemes carried out in your area since 2015 are listed below.

Plan showing completed integrated transport, bridge and drainage schemes since 2015





**Integrated transport schemes since 2015**

No	Location	Description
179	Market Lavington	Spin hill / Ledge Hill junction signs
180	Little Cheverell	Low Road unsuitable for HGV signs
262	Allington	C8 at Allington - 40 mph speed limit
277	Marston	Marston Speed Limit Signing
31	A360	A360 Frieth nameplates
32	Devizes	Various locations cycle parking Winkworth
33	Devizes	Various locations cycle parking O/s Roses
34	Devizes	Various locations cycle parking Central car Park
35	Devizes	Various locations cycle parking Monday Market Street
36	Devizes	Various locations cycle parking opposite Tesco
37	Devizes	Various locations cycle parking Sheep St
38	Devizes	Various locations cycle parking outside Sainsbury
39	C249	C class speed limit reviews C249 implementation
40	Great Cheverell	Green Lane speed limit investigation
41	Urchfont	20mph speed limit implementation
42	Urchfont	20mph speed limit implementation
43	Urchfont	Crossing point and bus stop hardstanding
122	A342 Rowde	Tourism signs to the Rowdey Cow Caf
128	C20 Worton	New Speed Limit - signs and markings
156	Devizes	Directions signs to Air Training Corps / ACF

**Bridge schemes since 2014**

No	Location	Description
373	Marston	Plough Footbridge, Marston, Rebuild Elevations and Parapet
381	Bromham	Retaining wall Chantry Church Hill Bromham repair following road traffic collision
504	Bromham	Retaining wall Chantry Church Hill Bromham repair following road traffic collision
559	Market Lavington	General re-pointing

**Drainage works since 2015**

No	Location	Description
305	Devizes	New surface water system
325	Devizes	Install new system/headwall and pipework
336	Devizes	Culvert reconstruction
352	Devizes	Rebuild of existing outfall system

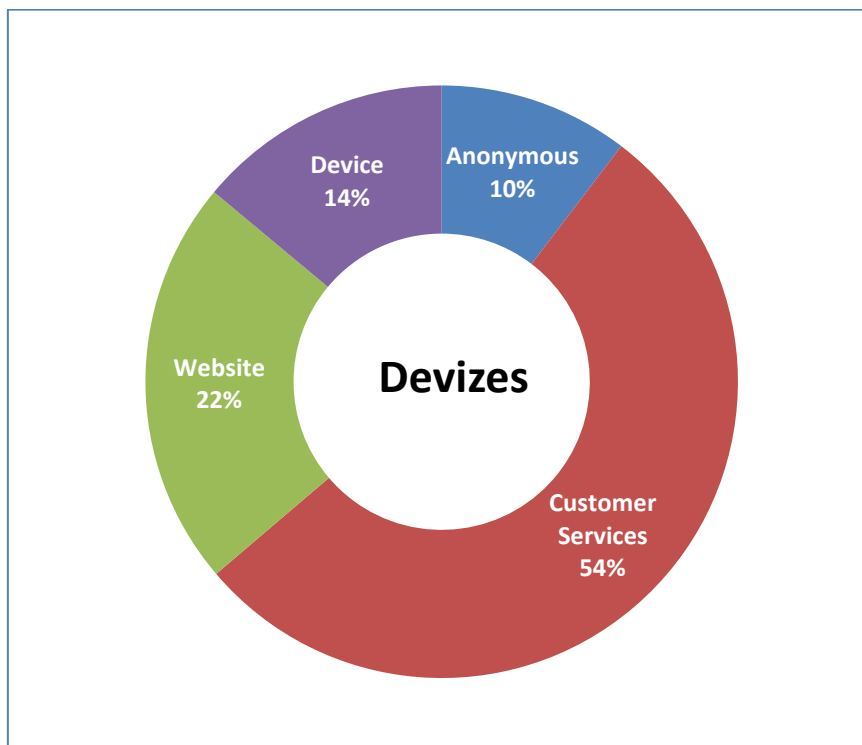
## My Wiltshire



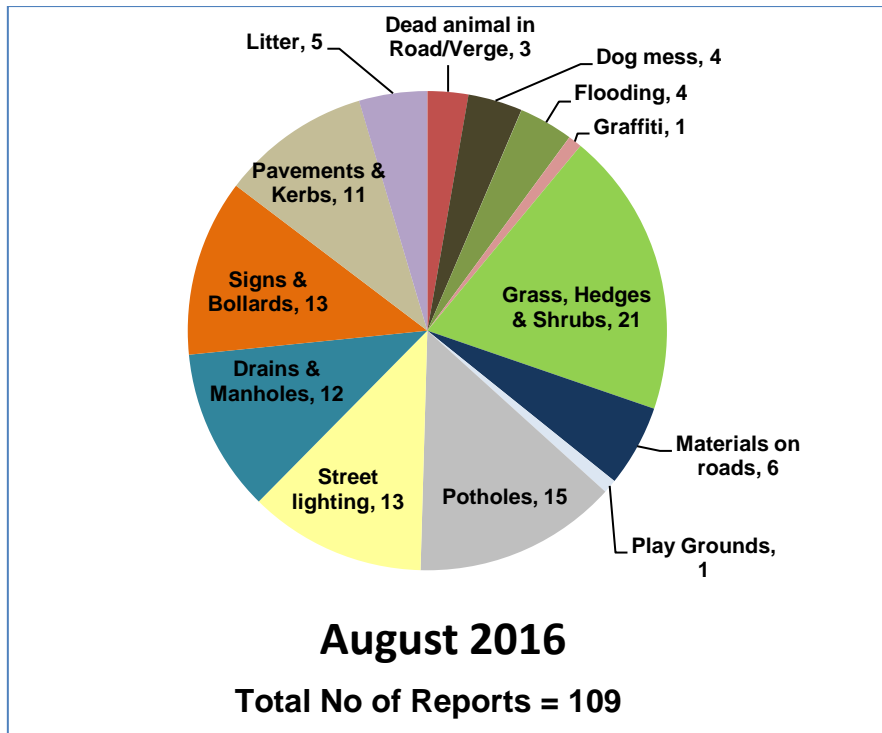
My Wiltshire provides an easy way to report highway issues, including using the Council's website. We have an app so you can report on the go using your smartphone. The My Wiltshire app is available to download at both the [App Store](#) (for iPhones and iPads), from [Google Play](#)<sup>™</sup> (for Android phones) and Windows Store. You can attach information such as photos or videos and pinpoint the location of your report using the mapping software on your phone.

A summary of recent reports in your area is shown below, and further details are shown in Appendix B.

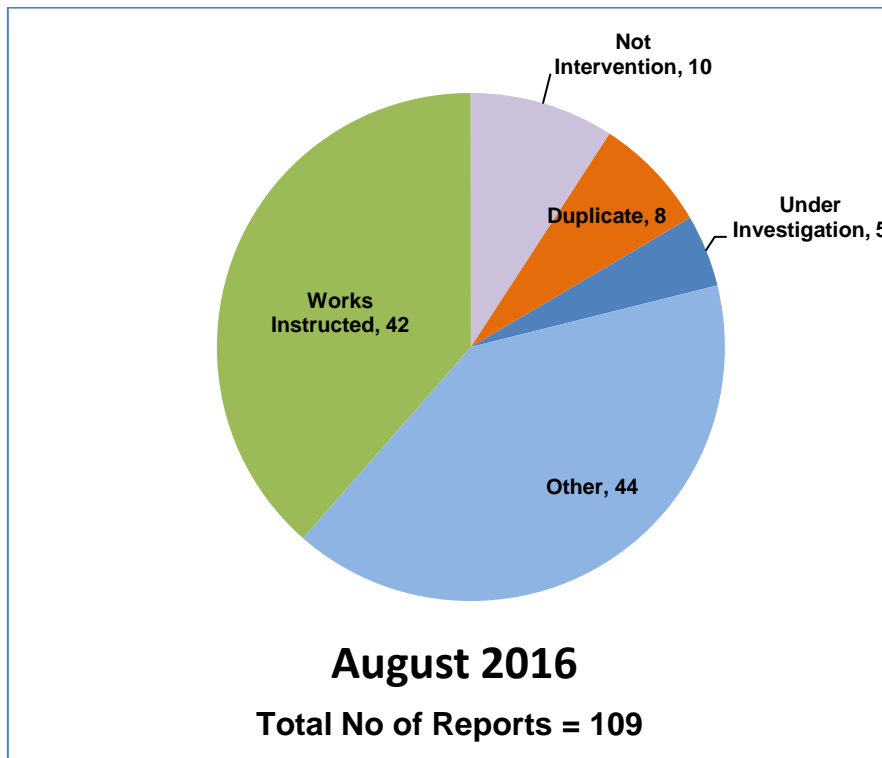
### Customer reporting methods in your area



### Customer reports in your area for the month of August 2016



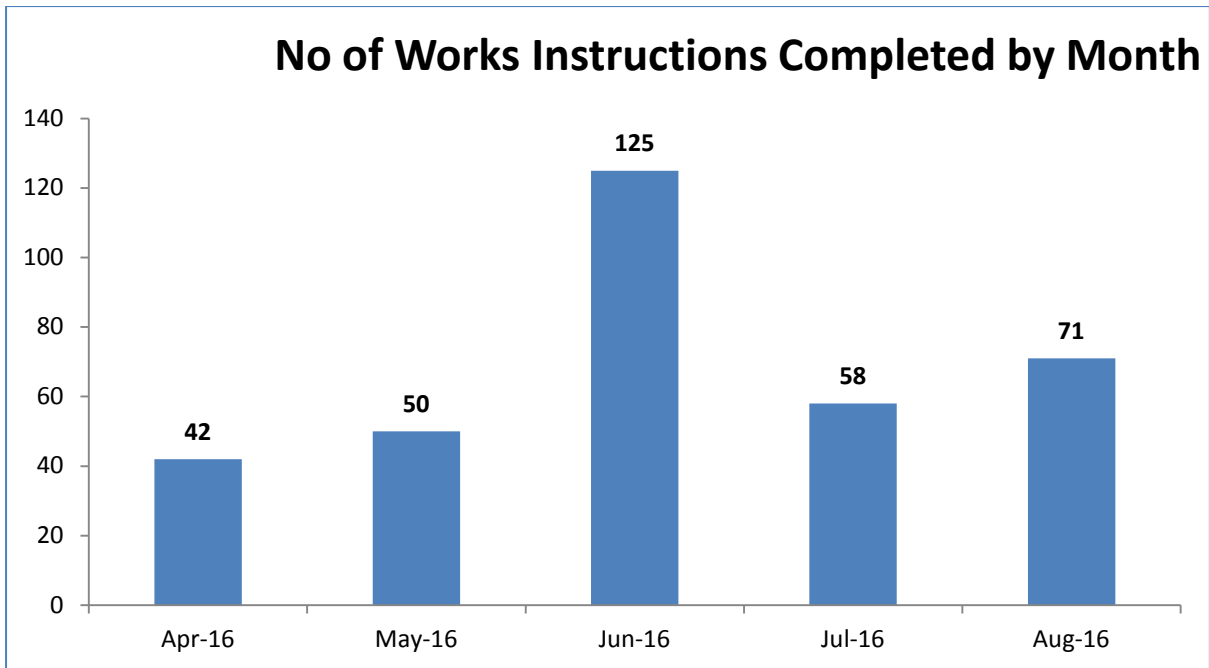
### Actions following recent reports in your area



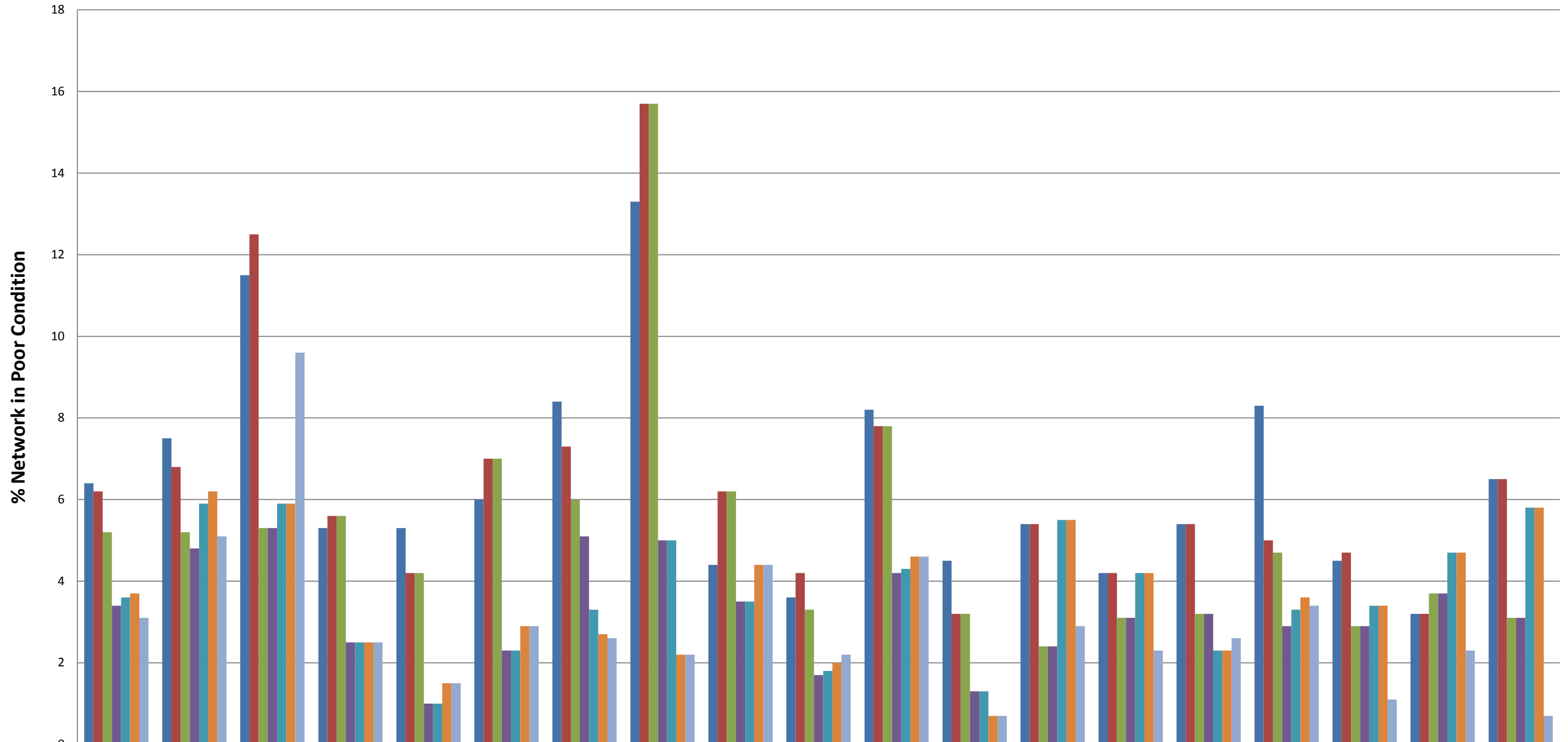
## Action definitions

1. **Not Intervention** – the technician has attended site and classified the defect as not meeting intervention levels as per the Highway Inspection Manual 2013 or in the case of streetscene reports, service level agreements.
2. **Duplicate** – a report has already been received in relation to this issue and a works instruction has previously been passed to the contractor to undertake a repair/carry out the necessary works.
3. **Under Investigation** – this issue is currently with a Highways technician or engineer – they may be awaiting information from the customer or the issue requires further investigation e.g. wet weather inspection, drainage survey, exploratory excavation, ownership query.
4. **Discretionary works** – this issue is not a highway safety issue and has been identified as one which falls within the remit of the parish steward scheme.
5. **Other** – the issue has been identified as one which does not require any action by Local Highways. This could be for a number of reasons –
  - the report has been cancelled by the user,
  - there is insufficient information provided to assess the issue and the customer has not provided contact details,
  - the issue is not the responsibility of Wiltshire Council e.g. un-adopted highway, gas/electricity/telephone/water/cable company, Highways England, housing association,
  - the technician attended site and nothing was found at the stated location
  - the issue has been passed to another service within Wiltshire Council e.g. rights of way, bridges.
6. **Works Instructed** – the technician has assessed the issue as requiring works to be carried out and has either dealt with the issue personally or has referred it to the contractor for repair.

Highway defects completed in your area in recent months

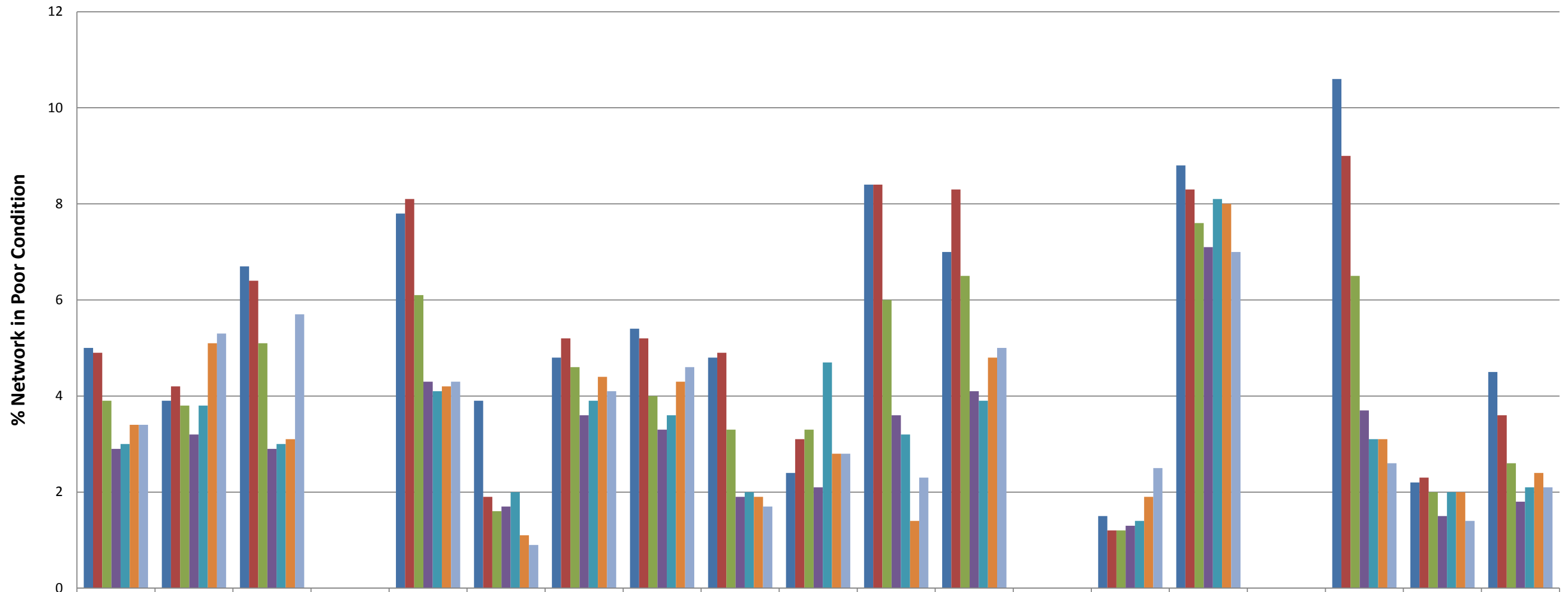


### % A Road Network in Poor Condition



	Wiltshire	Amesbury	Bradford On Avon	Calne	Chippenham	Corsham	Devizes	Malmesbury	Marlborough	Melksham	Pewsey	Royal Wootton Bassett & Cricklade	Salisbury	South West Wiltshire	Southern Wiltshire	Tidworth	Trowbridge	Warminster	Westbury
■ 2009/10	6.4	7.5	11.5	5.3	5.3	6	8.4	13.3	4.4	3.6	8.2	4.5	5.4	4.2	5.4	8.3	4.5	3.2	6.5
■ 2010/11	6.2	6.8	12.5	5.6	4.2	7	7.3	15.7	6.2	4.2	7.8	3.2	5.4	4.2	5.4	5	4.7	3.2	6.5
■ 2011/12	5.2	5.2	5.3	5.6	4.2	7	6	15.7	6.2	3.3	7.8	3.2	2.4	3.1	3.2	4.7	2.9	3.7	3.1
■ 2012/13	3.4	4.8	5.3	2.5	1	2.3	5.1	5	3.5	1.7	4.2	1.3	2.4	3.1	3.2	2.9	2.9	3.7	3.1
■ 2013/14	3.6	5.9	5.9	2.5	1	2.3	3.3	5	3.5	1.8	4.3	1.3	5.5	4.2	2.3	3.3	3.4	4.7	5.8
■ 2014/15	3.7	6.2	5.9	2.5	1.5	2.9	2.7	2.2	4.4	2	4.6	0.7	5.5	4.2	2.3	3.6	3.4	4.7	5.8
■ 2015/16	3.1	5.1	9.6	2.5	1.5	2.9	2.6	2.2	4.4	2.2	4.6	0.7	2.9	2.3	2.6	3.4	1.1	2.3	0.7

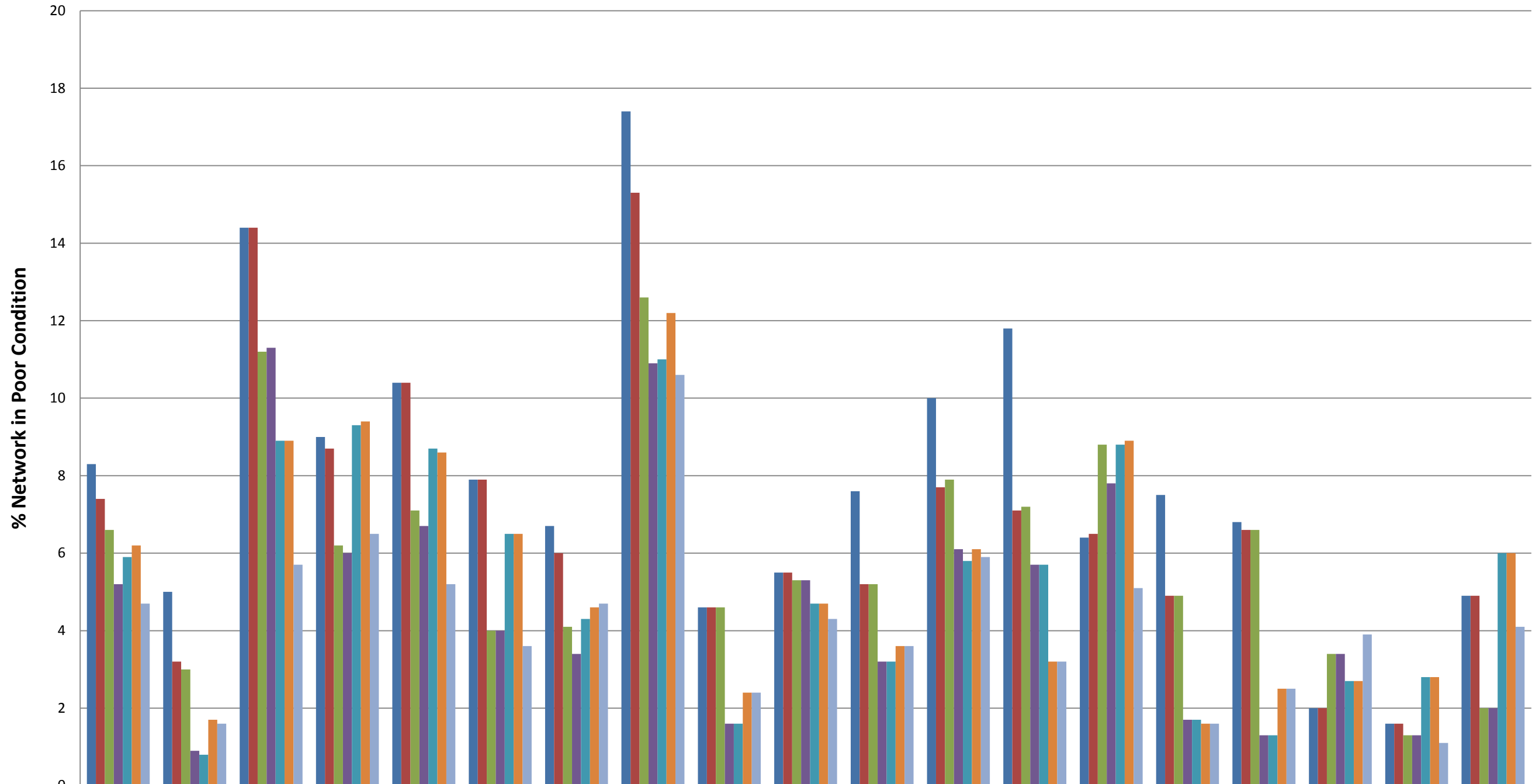
### % B Road Network in Poor Condition



	Wiltshire	Amesbury	Bradford On Avon	Calne	Chippenham	Corsham	Devizes	Malmesbury	Marlborough	Melksham	Pewsey	Royal Wootton Bassett & Cricklade	Salisbury	South West Wiltshire	Southern Wiltshire	Tidworth	Trowbridge	Warminster	Westbury
■ 2009/10	5	3.9	6.7	0	7.8	3.9	4.8	5.4	4.8	2.4	8.4	7	0	1.5	8.8	0	10.6	2.2	4.5
■ 2010/11	4.9	4.2	6.4	0	8.1	1.9	5.2	5.2	4.9	3.1	8.4	8.3	0	1.2	8.3	0	9	2.3	3.6
■ 2011/12	3.9	3.8	5.1	0	6.1	1.6	4.6	4	3.3	3.3	6	6.5	0	1.2	7.6	0	6.5	2	2.6
■ 2012/13	2.9	3.2	2.9	0	4.3	1.7	3.6	3.3	1.9	2.1	3.6	4.1	0	1.3	7.1	0	3.7	1.5	1.8
■ 2013/14	3	3.8	3	0	4.1	2	3.9	3.6	2	4.7	3.2	3.9	0	1.4	8.1	0	3.1	2	2.1
■ 2014/15	3.4	5.1	3.1	0	4.2	1.1	4.4	4.3	1.9	2.8	1.4	4.8	0	1.9	8	0	3.1	2	2.4
■ 2015/16	3.4	5.3	5.7	0	4.3	0.9	4.1	4.6	1.7	2.8	2.3	5	0	2.5	7	0	2.6	1.4	2.1

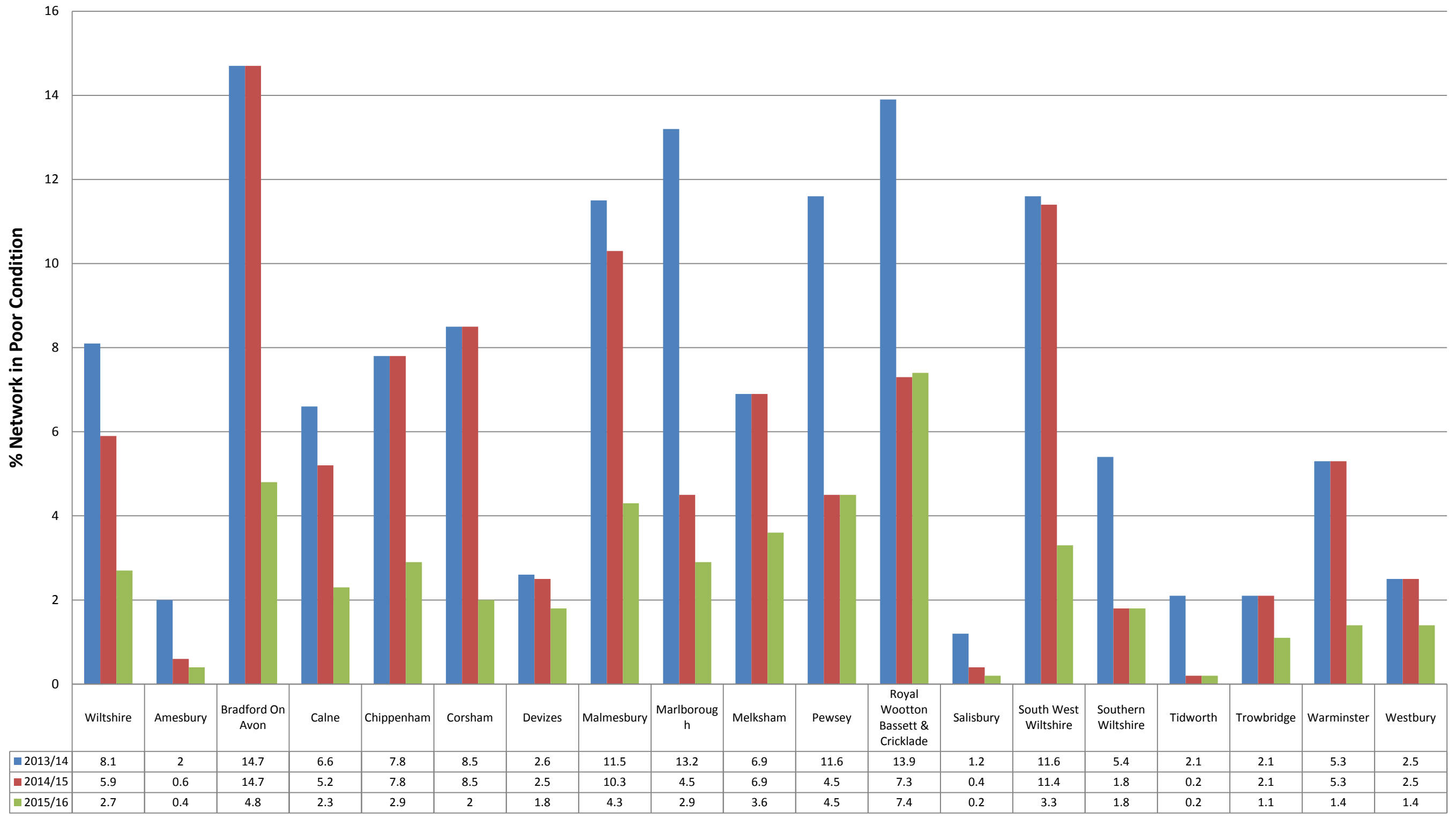


### % C Road Network in Poor Condition



	Wiltshire	Amesbury	Bradford On Avon	Calne	Chippenham	Corsham	Devizes	Malmesbury	Marlborough	Melksham	Pewsey	Royal Wootton Bassett & Cricklade	Salisbury	South West Wiltshire	Southern Wiltshire	Tidworth	Trowbridge	Warminster	Westbury
■ 2009/10	8.3	5	14.4	9	10.4	7.9	6.7	17.4	4.6	5.5	7.6	10	11.8	6.4	7.5	6.8	2	1.6	4.9
■ 2010/11	7.4	3.2	14.4	8.7	10.4	7.9	6	15.3	4.6	5.5	5.2	7.7	7.1	6.5	4.9	6.6	2	1.6	4.9
■ 2011/12	6.6	3	11.2	6.2	7.1	4	4.1	12.6	4.6	5.3	5.2	7.9	7.2	8.8	4.9	6.6	3.4	1.3	2
■ 2012/13	5.2	0.9	11.3	6	6.7	4	3.4	10.9	1.6	5.3	3.2	6.1	5.7	7.8	1.7	1.3	3.4	1.3	2
■ 2013/14	5.9	0.8	8.9	9.3	8.7	6.5	4.3	11	1.6	4.7	3.2	5.8	5.7	8.8	1.7	1.3	2.7	2.8	6
■ 2014/15	6.2	1.7	8.9	9.4	8.6	6.5	4.6	12.2	2.4	4.7	3.6	6.1	3.2	8.9	1.6	2.5	2.7	2.8	6
■ 2015/16	4.7	1.6	5.7	6.5	5.2	3.6	4.7	10.6	2.4	4.3	3.6	5.9	3.2	5.1	1.6	2.5	3.9	1.1	4.1

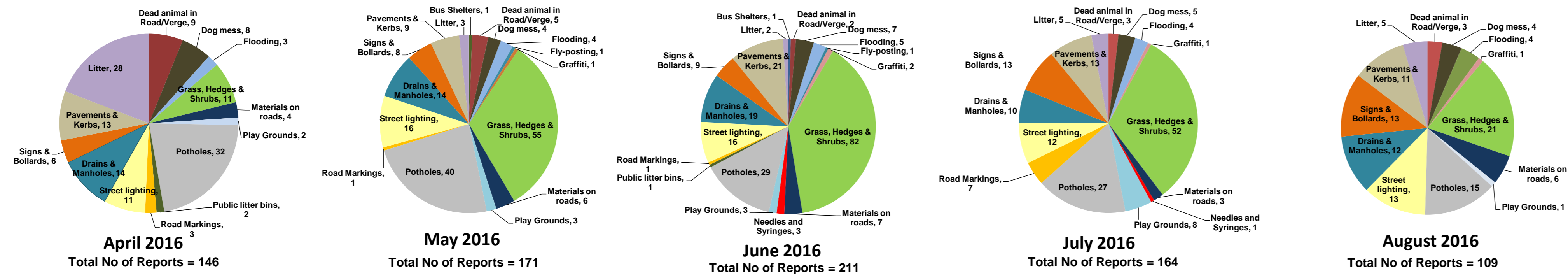
### % Unclassified Road Network in Poor Condition



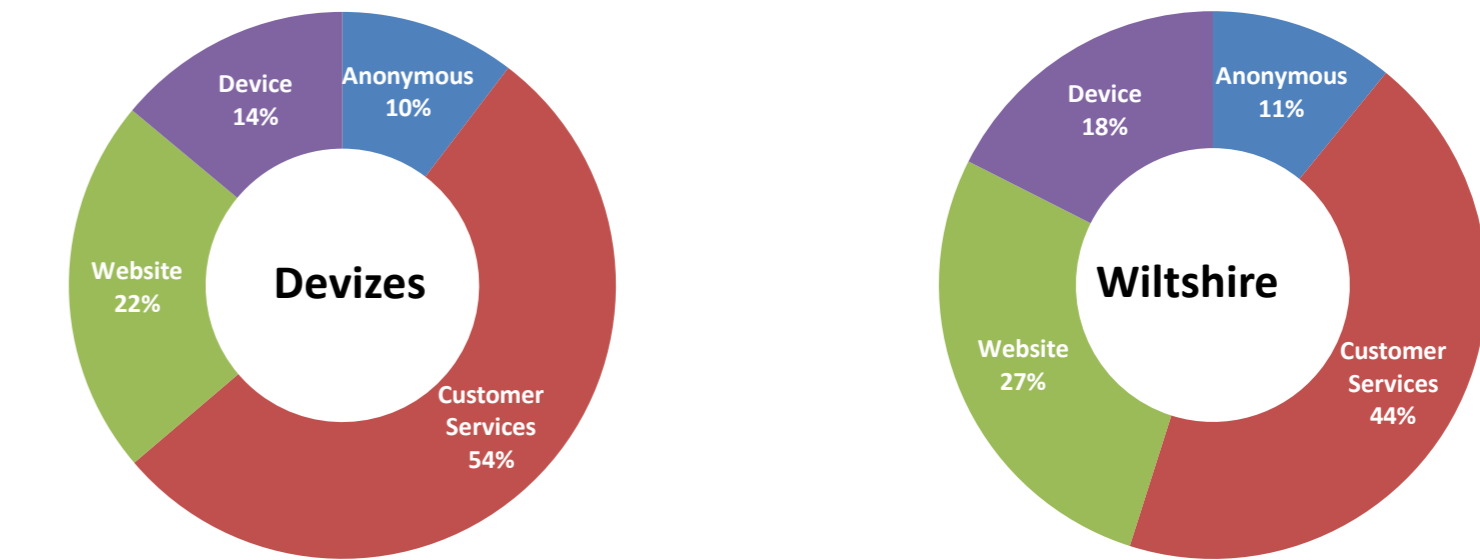
# Appendix B: My Wiltshire Statistics



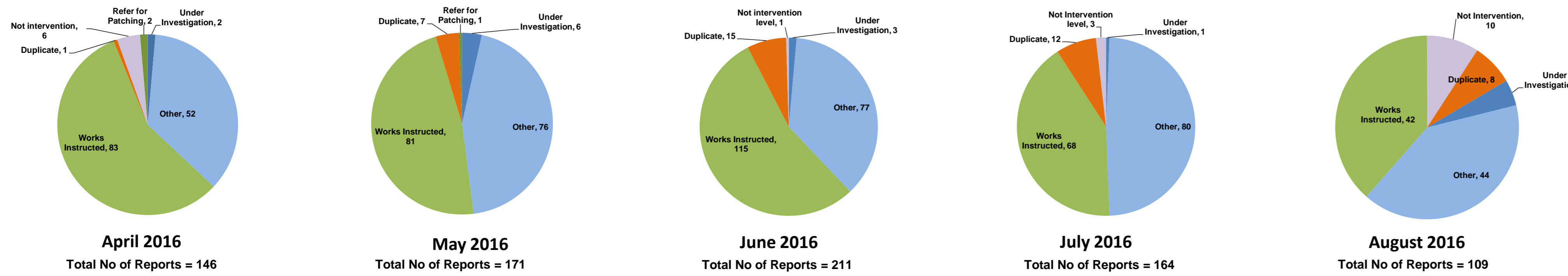
### Customer Reported Issues



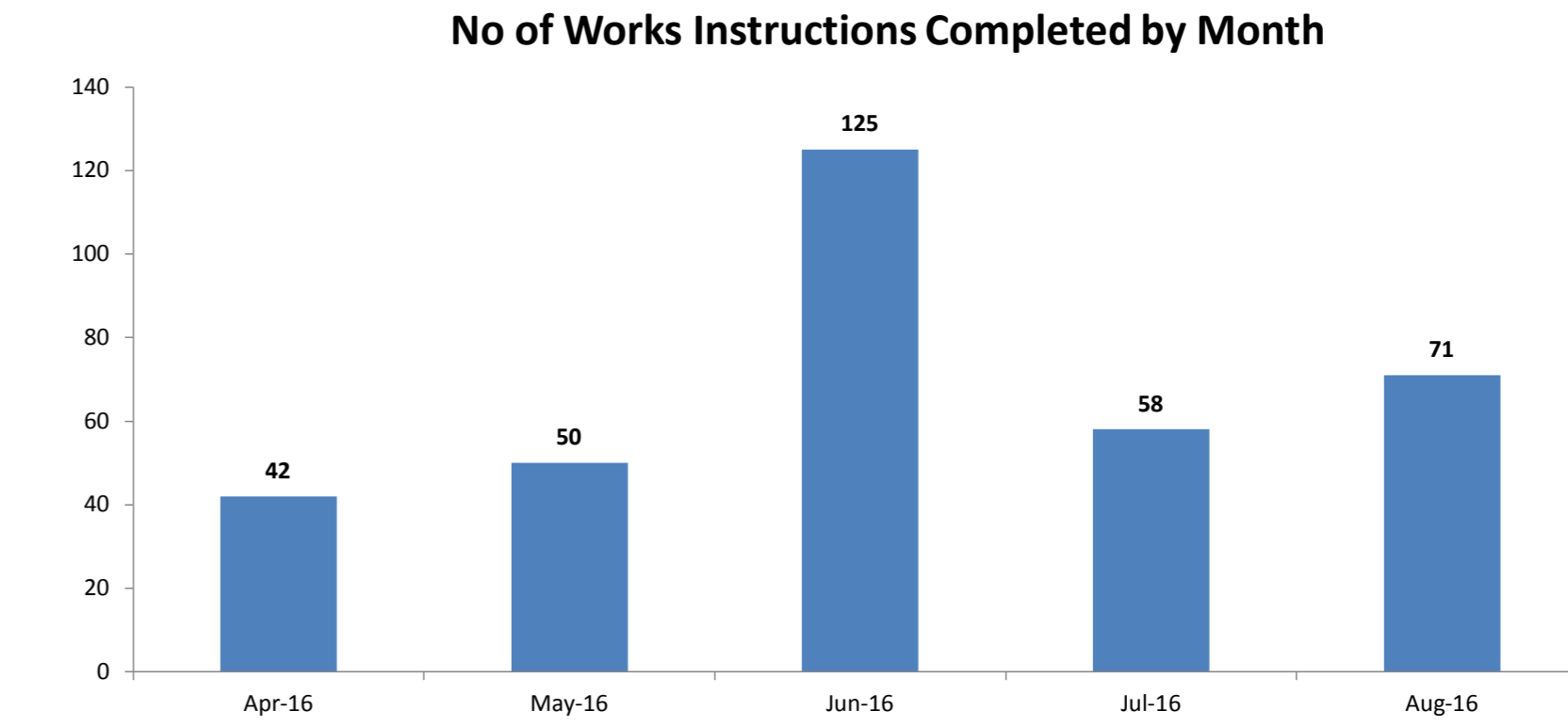
### Reporting Channels



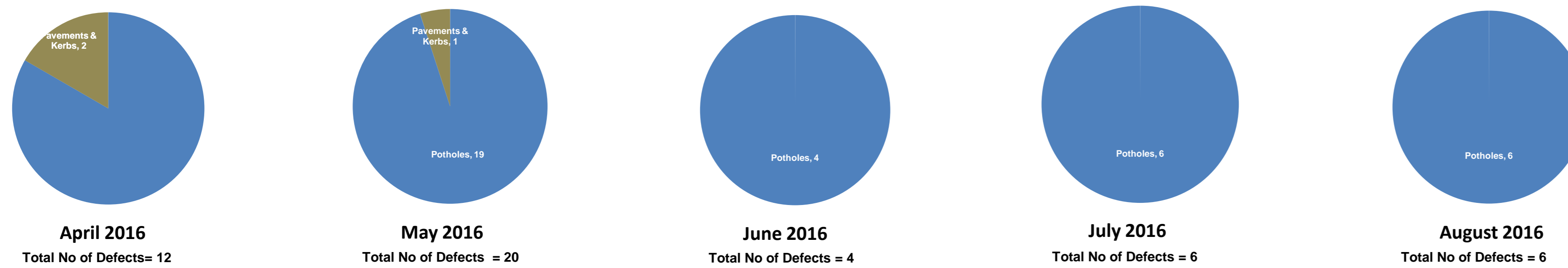
### Customer Call Outcomes



### Completed in Month



### Safety Inspections





<b>Report to</b>	Devizes Area Board
<b>Date of Meeting</b>	07/03/2017
<b>Title of Report</b>	Community Area Grant funding

**Purpose of the report:**

To consider the applications for funding listed below

<b>Applicant</b>	<b>Amount requested</b>
<b>Applicant:</b> Bromham parish council <b>Project Title:</b> Bromham Village Central Play Area Scheme  <a href="#">View full application</a>	£2950.00
<b>Applicant:</b> rowde village community shop <b>Project Title:</b> Fresh vegetable chiller for better preservation of veg.  <a href="#">View full application</a>	£952.00
<b>Applicant:</b> Waiblingen Way Residents Association <b>Project Title:</b> Ride on Mower  <a href="#">View full application</a>	£1250.00
<b>Applicant:</b> Market Lavington Museum <b>Project Title:</b> Repairs to wall	£1250.00

**1. Background**

Area Boards have authority to approve Area Grants under powers delegated to them. Under the Scheme of Delegation Area Boards must adhere to the [Area Board Grants Guidance](#)

[The funding criteria and application forms](#) are available on the council's website.

**2. Main Considerations**

2.1. Councillors will need to be satisfied that funding awarded in the 2015/2016 year is made to projects that can realistically proceed within a year of it being awarded.

2.2. Councillors must ensure that the distribution of funding is in accordance with the Scheme of Delegation to Area Boards.

2.3. Councillors will need to be satisfied that the applications meet the Community Area Board grants criteria.

### 3. Environmental & Community Implications

Grant Funding will contribute to the continuance and/or improvement of cultural, social and community activity and wellbeing in the community area, the extent of which will be dependent upon the individual project.

### 4. Financial Implications

Financial provision had been made to cover this expenditure.

### 5. Legal Implications

There are no specific legal implications related to this report.

### 6. Human Resources Implications

There are no specific human resources implications related to this report.

### 7. Equality and Inclusion Implications

Community Area Boards must fully consider the equality impacts of their decisions in order to meet the Council's Public Sector Equality Duty.

Community Area Grants will give local community and voluntary groups, Town and Parish Council's equal opportunity to receive funding towards community based projects and schemes, where they meet the funding criteria.

### 8. Safeguarding Implications

The Area Board has ensured that the necessary policies and procedures are in place to safeguard children, young people and vulnerable adults.

### 9. Applications for consideration

Application ID	Applicant	Project Proposal	Requested
<a href="#">2156</a>	Bromham parish council	Bromham Village Central Play Area Scheme	£2950.00
<b>Project Description:</b> This grant is to replace the current unsafe fencing in the Play Area adjacent to the Social Centre. This will include a new gate to ensure all the smaller children will be safely retained in this area. The current fencing is timber posts and wire. The posts are rotting in the ground causing the fence to be at an acute angle. The wire is also unravelling in areas which could cause injury. The new fencing is metal and low maintenance guaranteed for 25 years. We could provide photographs of current fencing and gate if required.			
<b>Proposal</b> That the Area Board determines the application.			

Application ID	Applicant	Project Proposal	Requested
<a href="#">2159</a>	rowde village community shop	Fresh vegetable chiller for better preservation of veg.	£952.00
<p><b>Project Description:</b> Our vegetables are in a rack displayed in the entrance of our community shop. This although looks attractive is not good for a longer long life duration in the summer months. If we had a display chiller this would save our wastage levels in the longer term.</p>			
<p><b>Proposal</b> That the Area Board determines the application.</p>			

Application ID	Applicant	Project Proposal	Requested
<a href="#">2331</a>	Waiblingen Way Residents Association	Ride on Mower	£1250.00
<p><b>Project Description:</b> The residents association maintain the large play area and community garden and this requires a ride on mower. They also help some of the older folks in Waiblingen Way mow their own lawns. The current ride on mower is too big for this job so the association use a hand mower. This hand mower is now unsuitable for the job so they would like to purchase a smaller ride on mower which can be used for both jobs.</p>			
<p><b>Proposal</b> That the Area Board determines the application.</p>			

Application ID	Applicant	Project Proposal	Requested
2316	Market Lavington Museum	Wall repair	£1250.00
<p><b>Project Description:</b> One of the walls at Market Lavington Museum has developed a large crack that requires fixing to ensure it doesnt get any worse. Therefore we are approaching Devizes Area Board to ask for some of the cost to repair the wall.</p>			
<p><b>Proposal</b> That the Area Board determines the application.</p>			

No unpublished documents have been relied upon in the preparation of this report

**Report Author:**

Graeme Morrison

Community Engagement Manager

01225 713573

[graeme.morrison@wiltshire.gov.uk](mailto:graeme.morrison@wiltshire.gov.uk)



<b>Report to</b>	Devizes Area Board
<b>Date of Meeting</b>	07/03/2017
<b>Title of Report</b>	Other funding applications/approvals

**Purpose of the report:**

To consider the proposal for funding listed below

Area Board Sub-Group/Applicant	Amount requested
Devizes Community Area Wellbeing Group recommends that Devizes Area Board approve a grant application of £860 for the Safe Places project to pay for marketing materials and costs.	£860.00

**1. Background**

Area Boards have authority to approve Area Grants under powers delegated to them. Under the Scheme of Delegation Area Boards must adhere to the [Area Board Grants Guidance](#)

[The funding criteria and application forms](#) are available on the council's website.

**2. Main Considerations**

2.1. Councillors will need to be satisfied that funding awarded in the 2015/2016 year is made to projects that can realistically proceed within a year of it being awarded.

2.2. Councillors must ensure that the distribution of funding is in accordance with the Scheme of Delegation to Area Boards.

2.3. Councillors will need to be satisfied that the applications meet the Community Area Board grants criteria.

**3. Environmental & Community Implications**

Grant Funding will contribute to the continuance and/or improvement of cultural, social and community activity and wellbeing in the community area, the extent of which will be dependent upon the individual project.

**4. Financial Implications**

Financial provision had been made to cover this expenditure.

**5. Legal Implications**

There are no specific legal implications related to this report.

**6. Human Resources Implications**

There are no specific human resources implications related to this report.

## **7. Equality and Inclusion Implications**

Community Area Boards must fully consider the equality impacts of their decisions in order to meet the Council's Public Sector Equality Duty.

Community Area Grants will give local community and voluntary groups, Town and Parish Council's equal opportunity to receive funding towards community based projects and schemes, where they meet the funding criteria.

## **8. Safeguarding Implications**

The Area Board has ensured that the necessary policies and procedures are in place to safeguard children, young people and vulnerable adults.

### **Report Author:**

Graeme Morrison

Community Engagement Manager

01225 713573

[Richard.Rogers@wiltshire.gov.uk](mailto:Richard.Rogers@wiltshire.gov.uk)